

**TECHNICAL MANUAL**

**ORGANIZATIONAL, DIRECT SUPPORT,  
AND GENERAL SUPPORT MAINTENANCE  
REPAIR PARTS AND SPECIAL TOOLS LIST  
(INCLUDING DEPOT MAINTENANCE REPAIR PARTS  
AND SPECIAL TOOLS)**

**FOR**

**AIR CONDITIONER, VERTICAL COMPACT,  
6,000 BTU  
115 VOLT, SINGLE PHASE, 50/60 HZ  
WEDJ MODEL VM 6000-115  
NSN 4120-00-935-1608**

**AIR CONDITIONER, VERTICAL COMPACT,  
6,000 BTU  
208 VOLTS, THREE PHASE, 400 HZ  
WEDJ MODEL VM 6000-400  
NSN 4120-01-01-935-1607**



CHANGE }  
NO. 1 }

HEADQUARTERS  
DEPARTMENT OF THE ARMY  
WASHINGTON, D. C., 21 February 1987

Organizational, Direct Support,  
and General Support Maintenance  
Repair Parts and Special Tools List  
(Including Depot Maintenance Repair Parts and Special Tools)  
for

AIR CONDITIONER, VERTICAL COMPACT,  
6,000 BTU  
115 VOLT, SINGLE PHASE, 50/60 HZ  
WEDJ MODEL VM 60000-115  
NSN 4120-00-935-1608

AIR CONDITIONER, VERTICAL COMPACT,  
6,000 BTU  
208 VOLTS, THREE PHASE, 400 HZ  
WEDJ MODEL VM 60000-400  
NSN 4120-01-175-9730

TM 5-4120-355-24P, 29 November 1979, is changed as follows:

1. Title is changed as shown above.
2. Remove and insert pages as indicated below. New or changed text material is indicated by a vertical bar in the margin. An illustration change is indicated by a miniature pointing hand.

Remove pages

3 and 4  
9 and 10  
13 through 16

Insert pages

3 and 4  
9 and 10  
13 through 16

3. Retain this sheet in front of manual for reference purposes.

By Order of the Secretary of the Army:

Official:

**R. L. DILWORTH**  
**Brigadier General, United States Army**  
**The Adjutant General**

**JOHN A. WICKHAM, JR.**  
**General, United States Army**  
**Chief of Staff**

DISTRIBUTION:

To be distributed in accordance with DA Form 12-25A, Organizational, Direct Support and General Support Maintenance requirements for Air Conditioner, Vertical Compact, 6000 BTU (VM-6000-115: 115V, 50/60HZ, 1PH; VM 6000-400: 208V, 400HZ, 3PH)



TECHNICAL MANUAL

No. 5-4120-355-24P

HEADQUARTERS  
DEPARTMENT OF THE ARMY  
WASHINGTON, DC 29 November 1979

**ORGANIZATIONAL, DIRECT SUPPORT  
AND GENERAL SUPPORT MAINTENANCE  
REPAIR PARTS AND SPECIAL TOOLS LIST  
(INCLUDING DEPOT MAINTENANCE REPAIR PARTS)**

**FOR**

**AIR CONDITIONER, VERTICAL COMPACT, 6,000  
BTU 115 VOLT, SINGLE PHASE, 50/60 HZ  
WEDJ MODEL VM 6000-115  
NSN 4120-00-935-1608**

**AIR CONDITIONER, VERTICAL COMPACT, 6,000 BTU  
208 VOLTS, THREE PHASE, 400 HZ  
(WEDJ MODEL VM 6000-400)  
NSN 4120-01-175-9730**

**Current as of 8 October 1979**

REPORTING ERRORS AND RECOMMENDING IMPROVEMENTS

You can help improve this manual. If you find any mistake or if you know of a way to improve the procedures, please let us know. Mail your letter, DA Form 2028 (Recommended Changes to Publications and Blank Forms), or DA Form 2028-2 located in the back of this manual direct to: Commander, U.S. Army Troop Support Command, ATTN: AMSTR-MCTS, 4300 Goodfellow Boulevard, St. Louis. MO 63120-1798. A reply will be furnished directly to you.

**Table of Contents**

	Page	Illus Figure
Section I. Introduction .....	1	
Section II. Repair parts list .....	7	
Group 01 Housing and panels .....	7	1
Body, chassis, panels, grilles, screens and air filter .....	8	1
Body, chassis, panels, grilles, screens and air filter .....	10	1
Blower Motor Blower Fans .....	13	
Group 02 Fans and motor .....	12	2
03 Control panel.....	14	3
04 Junction box .....	16	4
05 Compressor assembly .....	20	5
06 Evaporator, heater, indicators, and piping .....	22	6
07 Blockoff panel .....	30	7
08 Wiring Harnesses .....	32	8
III Special Tools List (Not Applicable)		
IV Federal Stock Number a Reference Number Index		



## Section I. INTRODUCTION

### 1. Scope.

This manual lists repair parts, special tools, test, measurement, and diagnostic equipment (TMDE), and other support equipment required for operation and performance of direct support, general support and depot maintenance of the Air Conditioner.

### 2. General.

*a. Section II - Repair Parts List.* A list of repair parts authorized for use in the performance of maintenance. The list also includes parts which must be removed for replacement of the authorized parts. Parts lists are composed of functional groups in ascending numerical sequence, with the parts in each group listed in figure and item number sequence. sequence.

*b. Section III - Special Tools List.* (Not applicable).

*c. Section IV - National Stock Number and Part Number Index.* A list, in ascending numerical sequence, of all National Stock numbers appearing in the listings, followed by a list, in alphanumeric sequence, of all part numbers appearing in the listings. National stock number and part numbers are cross-referenced to each illustration figure and item number appearance.

**3. Explanation of Columns.** The following provides and explanation of columns found in the tabular listings:

*a. Illustration.* This column is divided as follows:

(1) *Figure Number.* Indicates the figure number of the illustration in which the item is shown.

(2) *Item Number.* The number used to identify each item called out in the illustration.

*b. Source, Maintenance, and Recoverability (SMR).*

(1) *Source Code.* Source codes are assigned to support items to indicate the manner of acquiring support items for maintenance, repair, or overhaul of end items. Source codes are entered in the first and second positions of the Uniform SMR Code format as follows:

<i>Code</i>	<i>Definition</i>
PA	Item procured and stocked for anti-

pated or known usage.

PB	Item procured and stocked for insurance purposes because essentiality dictates that a minimum quantity be available in the supply systems.
PC	Item procured and stocked and which otherwise would be coded PA except that it is deteriorative in nature.
PD	Support item, excluding support equipment, procured for initial issue or outfitting and stocked only for subsequent or additional initial issues or outfittings. Not subject to automatic replenishment.
PE	Support equipment procured and stocked for initial issue or outfitting to specified maintenance repair activities.
PF	Support equipment which will not be stocked but which will be centrally procured on demand.
PG	Item procured and stocked to provide for sustained support for the life of the equipment. It is applied to an item peculiar to the equipment which, because of probable discontinuance or shutdown of production facilities, would prove uneconomical to reproduce at a later time.
KD	An item of a depot overhaul/repair kit and not purchased separately. Depot kit defined as a kit that provides items required at the time of overhaul or repair.
KF	An item of a maintenance kit and not purchased separately. Maintenance kit defined as a kit that provides an item that can be replaced at organizational or intermediate levels of maintenance.
KB	Item included in both a depot overhaul/repair kit and a maintenance kit.
MO	Item to be manufactured or fabricated at organizational level.
MF	Item to be manufactured or fabricated at the direct support maintenance level.
MH	Item to be manufactured or fabricated at the general support maintenance level.
MD	Item to be manufactured or fabricated at the depot support maintenance level.
AO	Item to be assembled at organizational level.

- AF Item to be assembled at direct support maintenance level.
- AH Item to be assembled at general support maintenance level.
- AD Item to be assembled at depot maintenance level.
- XA Item is not procured or stocked because the requirements for the item will result in the replacement of the next higher assembly.
- XB Item is not procured or stocked. If not available through salvage, requisition.
- XC Installation drawing, diagram, instruction sheet, field service drawing, that is identified by manufacturer's part number.
- XD A support item that is not stocked. When required, item will be procured through normal supply channels.

**NOTE**

***Cannibalization or salvage may be used as a source of supply for any items source coded a hove except those coded XA or XD.***

**(2) Maintenance Code.** Maintenance codes are assigned to indicate the levels of maintenance authorized to use and repair support items. The maintenance codes are entered in the third and fourth positions of the Uniform SMR Code format as follows:

(a) The maintenance code entered in the third position will indicate the lowest maintenance level authorized to remove, replace, and use the support item. The maintenance code entered in the third position will indicate one of the following levels of maintenance:

<b>Code</b>	<b>Application/Explanation</b>
C	Crew or operator maintenance performed within organizational maintenance.
O	Support item is removed, replaced, used at the organizational level.
F	Support item is removed, replaced, used at the direct support level.
H	Support item is removed, replaced, used at the general support level.
D	Support items that are removed, replaced, used at depot, mobile depot, specialized repair activity only.

(b) The maintenance code entered in the fourth position indicates whether the item is to be repaired and identifies the lowest maintenance level with the capability to perform complete repair (i.e., all authorized maintenance functions). This position will contain one of the following maintenance codes:

<b>Code</b>	<b>Application/Explanation</b>
O	The lowest maintenance level capable of complete repair of the support item is the organizational level.
F	The lowest maintenance level capable of complete repair of the support item is the direct support level.
H	The lowest maintenance level capable of complete repair of the support item is the general support level.
D	The lowest maintenance level capable of complete repair of the support item is the depot level.
L	Repair restricted to designated Specialized Repair Activity.
Z	Nonrepairable. No repair is authorized.
B	No repair is authorized. The item may be reconditioned by adjusting, lubricating, etc., at the user level. No parts or special tools are procured for the maintenance of this item.

**(3) Recoverability Code.** Recoverability codes are assigned to support items to indicate the disposition action on unserviceable items. The recoverability code is entered in the fifth position of the Uniform SMR Code format as follows:

<b>Recoverability</b>	
<b>Codes</b>	<b>Definition</b>
Z	Nonrepairable item. When unserviceable, condemn and dispose at the level indicated in position 3.
O	Reparable item. When uneconomically repairable, condemn and dispose at organizational level.
F	Reparable item. When uneconomically repairable, condemn and dispose at the direct support level.
H	Reparable item. When uneconomically repairable, condemn and dispose at the general support level.
D	Reparable item. When beyond lower level



repair capability, return to depot. Condemnation and disposal not authorized below depot level.

L Reparable item. Repair, condemnation, and disposal not authorized below depot/specialized repair activity level.

A Item requires special handling or condemnation procedures because of specific reasons (i.e., precious metal content, high dollar value, critical material or hazardous material). Refer to appropriate manuals/directives for specific instructions.

**c. National Stock Number.** Indicates the National stock number assigned to the item and will be used for requisitioning purposes.

**d. Part Number.** Indicates the primary number used by the manufacturer which controls the design and characteristics of the item by means of its engineering drawings, specifications, standards, and inspection requirements to identify an item or range of items.

**NOTE**

**When a stock numbered item is requisitioned, the repair part received may have a different part number than the part being replaced.**

**e. Federal Supply Code for Manufacturer (FSCM).** The FSCM is a 5-digit numeric code listed in SB 708-42 which is used to identify the manufacturer, distributor, or Government agency, etc.

**f. Description.** Indicates the Federal item name and, if required, a minimum description to identify the item. Items that are included in kits and sets are listed below the name of the kit or set with the quantity of each item in the kit or set indicated in the quantity incorporated in unit column. When the part to be used differs between serial numbers of the same model, the effective serial numbers are shown as the last line of the description. In the Special Tools List, the initial basis of issue (BOI) appears as the last line in the entry for each special tool, TMDE, and support equipment. When density of equipments supported exceeds density spread indicated in the basis of issue, the total authorization is increased accordingly.

**g. Unit of Measure (U/M).** Indicates the standard of the basic quantity of the listed item as used in performing the actual maintenance function. This measure is expressed by a two-character alpha-

betical abbreviation (e.g., ea, in., pr, etc.). When the unit of measure differs from the unit of issue, the lowest unit of issue that will satisfy the required units of measure will be requisitioned.

**h. Quantity Incorporated in Unit.** Indicates the quantity of the item used in the breakout shown on the illustration figure, which is prepared for a functional group, sub functional group, or an assembly, A "V" appearing in this column in lieu of a quantity indicates that no specific quantity is applicable (e.g., shims, spacers, etc.).

**4. Special Information.**

**a.** Detailed assembly instructions for items source coded to be assembled are found in TM 5-4310-362-14. Assembly components are listed immediately following the item to be assembled.

**b.** The following publications pertain to the Air Conditioner and its components.

TM 5-4120 -355-14	Operator, Organizational, Direct Support and General Support Maintenance Manual.
-------------------	--

**c.** Identification of the usable on codes included in the description column of this publication are: (Applicable only when identifying parts to particular model).

Code	Use On
CYY                    Model	VM6000-115
CYX                    Model	VM6000-400

**5. How to Locate Repair Parts.**

**a. When National Stock Number or Part Number is Unknown:**

**(1) First.** Using the table of contents, determine the assembly group within which the repair part belongs. This necessary since illustrations are prepared for assembly groups, and listings are divided into the same groups.

**(2) Second.** Find the illustration covering the assembly group to which the repair part belongs,

**(3) Third.** Identify the repair part on the illustration and note the illustration figure and item number of the repair part.

**(4) Fourth** Using the Repair Parts Listing, find the figure and item number noted on the illustration.

***b. When National Stock Number or Part Number is Known-***

**(1) First.** Using the Index of National Stock Numbers and Part Numbers, find the pertinent National stock number. This index is in ascending NIIN sequence followed by a list of part numbers in ascending alphanumeric sequence, cross-referenced to the illustration figure number and item number.

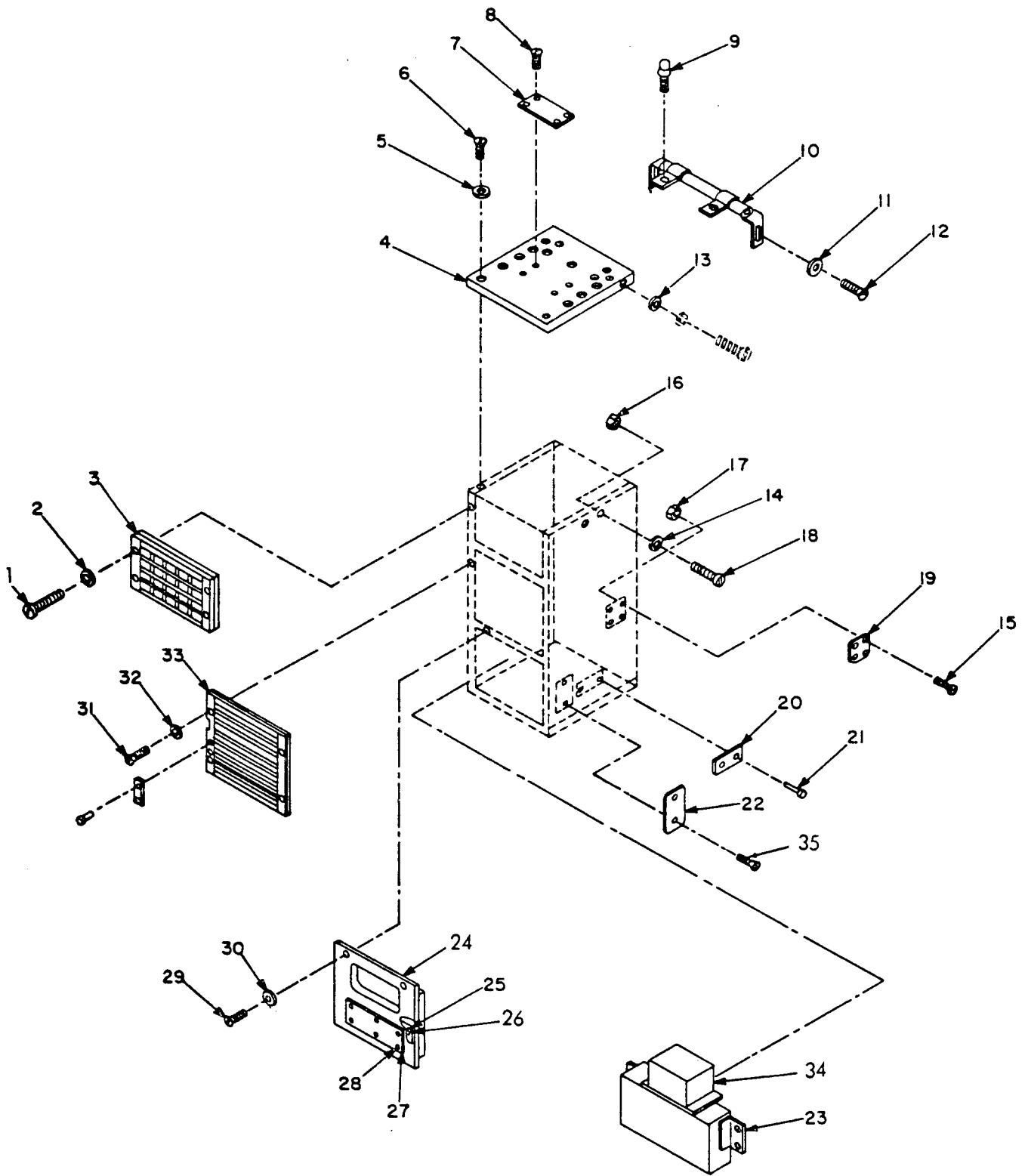
**6. Abbreviations.**

<b>Abbreviations</b>	<b>Explanation</b>
<b>DEG</b>	<b>degree(s)</b>
<b>EA</b>	<b>Each</b>
<b>FT</b>	<b>Feet (foot)</b>

<b>GRP</b>	<b>Group</b>
<b>ID</b>	<b>Inside Diameter</b>
<b>IN.</b>	<b>Inch(es)</b>
<b>LG</b>	<b>Long(length)</b>
<b>MTG</b>	<b>Mounting(s)</b>
<b>NO.</b>	<b>Number(s)</b>
<b>OD</b>	<b>Outside Diameter</b>

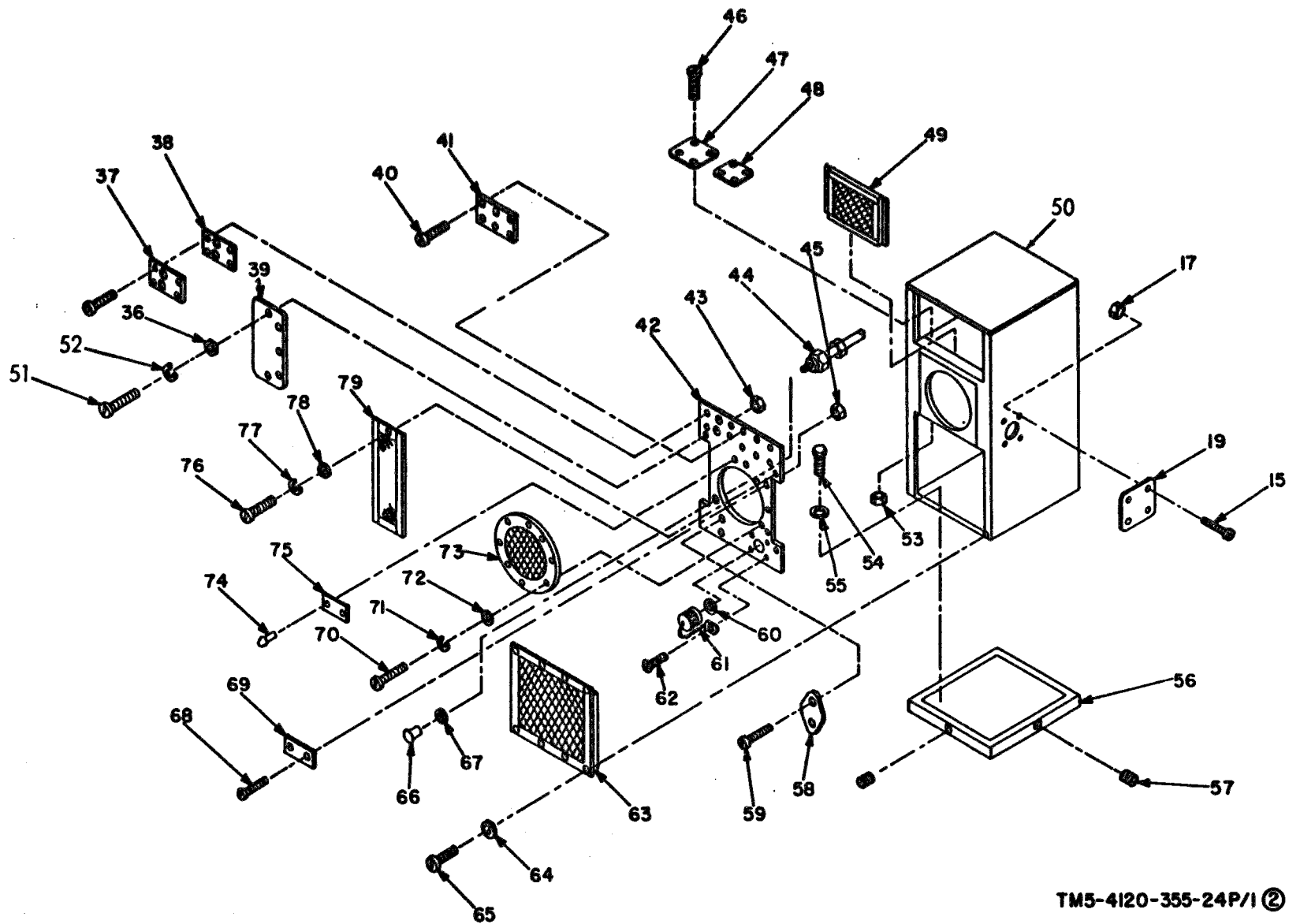
**(2) Second.** After finding the figure and item number, locate the figure and item number in the repair parts list.





TM5-4120-355-24P/1①

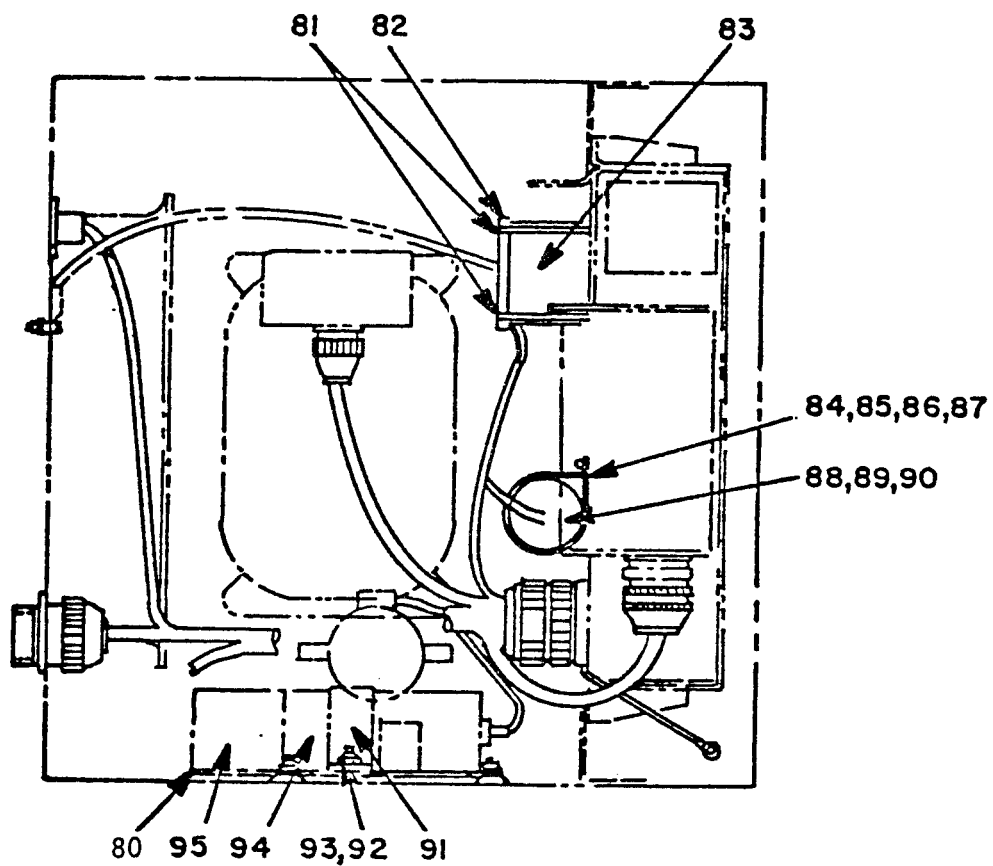
Figure 1. Body, chassis, panels, grilles, screens, and air filter  
(sheet 1 of 3).



TM5-4120-355-24P/1 (2)

Figure 1. Body, chassis, panels, grilles, screens, and air filter (sheet 2 of 3).

TM 5-4120-355-24P



TM5-4120-355-24P/1③

Figure 1. Body, chassis, panels, grilles, screens, and air filter  
(sheet 3 of 3).

(1) ILLUSTRATION (A) FIG NO	(2) (B) ITEM NO	(3) SMR CODE	(4) FEDERAL STOCK NUMBER	(5) PART NUMBER	(6) FSCM	TMS-4120-355-24P DESCRIPTION	(7) USABLE ON CODE U/M	(8) QTY INC IN UNIT
SECTION II. REPAIR PARTS LIST GROUP 01 - AIR CONDITIONING HOUSING AND PANELS								
1	1	PAOZZ	5305-00-984-6195	MS35206-247	96906	SCREW,MACHINE	EA	4
1	2	PAOZZ	5310-00-821-2366	13214E3469	97403	WASHER,FLAT	EA	4
1	3	PAOZZ		13214E3477	97403	GRILLE,METAL	EA	1
1	4	XBOZZ		13214E3384	97403	PANEL, TOP	EA	1
1	5	PAOZZ	5310-00-821-2366	13214E3469	97403	WASHER,FLAT	EA	15
1	6	PAOZZ	5305-00-984-6194	MS35206-246	96906	SCREW,MACHINE	EA	15
1	7	XBOZZ		MS63045	96906	PLATE, INSTRUCTION	EA	1
1	8	PAOZZ	5320-00-932-1972	AD42H	07707	RIVET, SOLID	EA	4
1	9	PAOZZ	5325-01-033-0846	13214E3647-3	97403	FASTENER, TURNBUTTON	EA	2
1	10	PBOZZ	4130-00-151-7248	13214E3534	97403	COVER,CANVAS	EA	1
1	11	PAOZZ	5310-00-821-2366	13214E3469	97403	WASHER,FLAT	EA	8
1	12	PAOZZ	5305-00-984-6194	MS35206-246	96906	SCREW,MACHINE	EA	8
1	13	PAOZZ	5330-00-285-9314	R655-71C110	97450	GASKET	CYY	EA 15
1	14	XBOZZ		NAS1523C3F	80205	PACKING PREFORMED	EA	4
1	15	PAOZZ	5305-00-889-2999	MS35206-217	96906	SCREW,MACHINE	EA	2
1	16	PAOZZ	5310-00-877-5798	MS21044D3	96906	NUT, SELF-LOCKING	EA	4
1	17	PAOZZ	5310-00-088-0551	MS21044N04	96906	NUT, SELF-LOCKING	EA	12
1	18	PAOZZ	5305-00-993-1848	MS35207-265	96906	SCREW,MACHINE	EA	2
1	19	XBOZZ		13214E3471-1	97403	PLATE,COVER	EA	3
1	20	XBOZZ		13218E7077	97403	PLATE, INSTRUCTION	EA	1
1	21	PAOZZ	5320-00-932-1972	AD42H	07707	RIVET, SOLID	EA	2
1	22	XBOZZ		13218E7076	97403	COVER, PLATE	EA	1
1	23	XBOZZ		13219E2929	97403	JUNCTION BOX SEE FIGURE 4 FOR COMPONENT PARTS	CYX	EA 1
1	23	XBOZZ		13219E2927	97403	JUNCTION BOX SEE FIGURE 4 FOR COMPONENT PARTS	CYX	EA 1
1	24	XBOZZ		13218E8178	97403	PANEL, LOWER	CYY	EA 1
1	24	XBOZZ		13218E9948-1	97403	PANEL, LOWER	CYX	EA 1
1	25	XBOZZ		13218E7079	97403	. PLATE, INFORMATION	EA	1
1	26	PAOZZ	5320-00-932-1972	AD42H	07707	. RIVET, SOLID	EA	6
1	27	XBOZZ		13220E6700	97403	. PLATE, INFORMATION	CYX	EA 1
1	27	XBOZZ		13220E6557	97403	. PLATE, INFORMATION	CYY	EA 1
1	28	PAOZZ	5320-00-874-4471	AD45H	07707	. RIVET, SOLID	EA	6
1	29	PAOZZ	5330-00-283-4649	12-11-713-11	94222	SCREW, PANEL	EA	2
1	30	PAOZZ	5310-00-880-9344	12-11014-12	94222	WASHER, RETAINING	EA	2
1	31	PAOZZ	5305-00-984-6195	MS35206-247	96906	SCREW,MACHINE	EA	4
1	32	PAOZZ	5310-00-821-2366	13214E3469	97403	WASHER, FLAT	EA	4
1	33	XBOZZ		13214E3478	97403	GRILLE, METAL	EA	1
1	34	XBOZZ		13219E2934	97403	CONTROL PANEL SEE FIGURE 3 FOR COMPONENT PARTS	EA	1
1	35	PAOZZ	5305-00-984-6193	MS35206-245	96906	SCREW,MACHINE	EA	2
1	36	PAOZZ	5310-00-809-8544	MS27183-7	96906	WASHER, LOCK	EA	5
1	37	XBOZZ		13216E9520-2	97403	PLATE, INSTRUCTION	EA	1
1	38	XBOZZ		13216E9519-2	97403	GASKET	EA	1

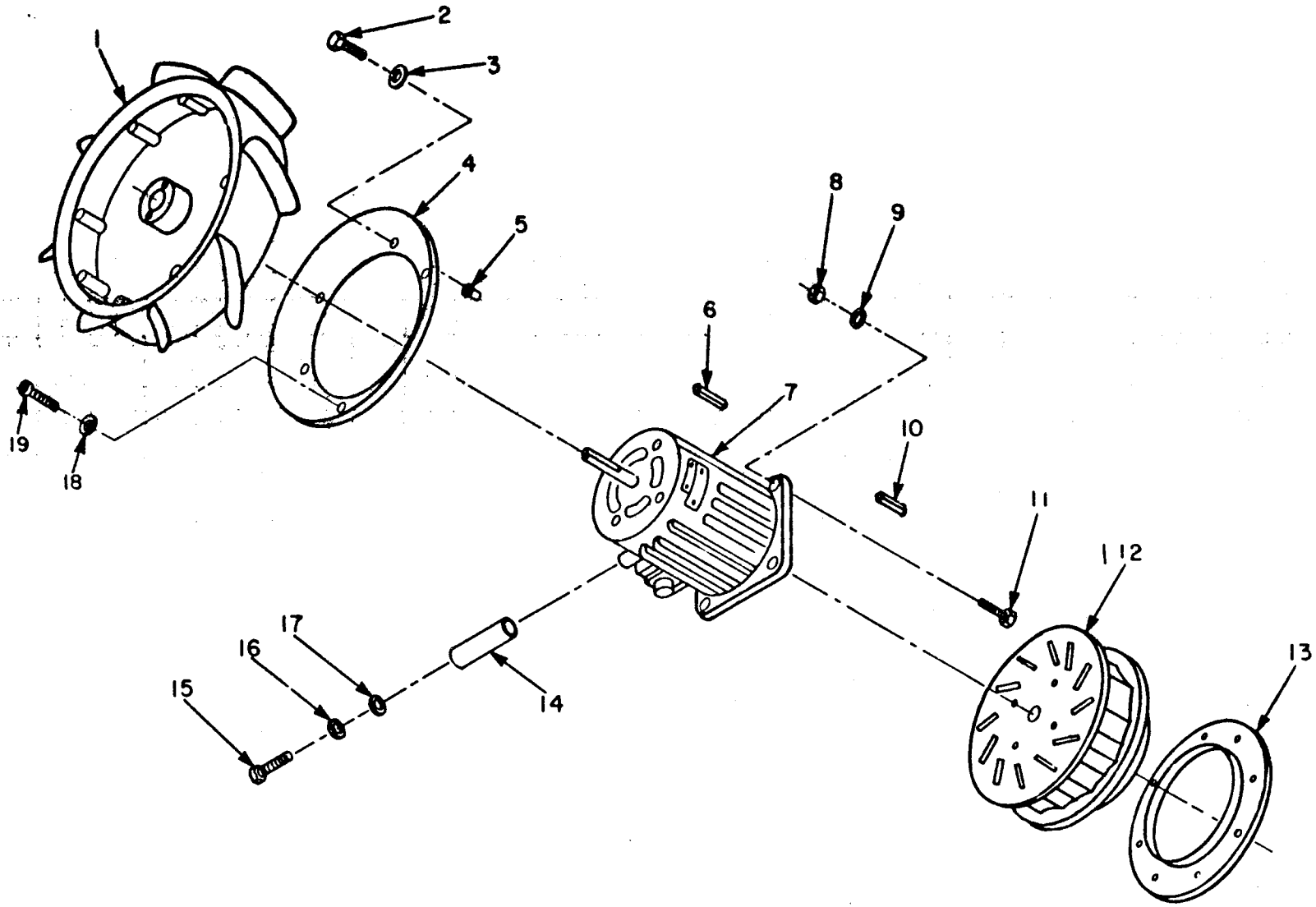
CHANGE 1

9

(1) ILLUSTRATION (A) FIG NO	(2) ITEM NO	(3) SMR CODE	(4) FEDERAL STOCK NUMBER	(5) PART NUMBER	(6) FSCM	TMS-4120-355-24P (6) DESCRIPTION	USABLE ON CODE	(7) U/M	(8) QTY INC IN UNIT
1	39	XBOZZ		13214E3551	97403	COVER		EA	1
1	40	PAOZZ	5305-00-984-6195	MS35206-247	96906	SCREW, MACHINE		EA	6
1	41	XBOZZ		13218E6977	97403	COVER, PLATE		EA	1
1	42	XBOZZ		13218E6697	97403	PANEL, BACK		EA	1
1	43	PAOZZ	5310-01-036-0908	MS27130-S14K	96906	NUT, FLAIN	CYX	EA	10
1	44	XBOZZ		13217E6815	97403	CONTROL ASSEMBLY		EA	1
1	45	PAOZZ	5310-00-088-0551	MS21044N04	96906	NUT, SELF-LOCKING		EA	2
1	46	PAOZZ	5305-00-984-4992	MS35206-232	96906	SCREW, MACHINE		EA	4
1	47	XBOZZ		13214E3471-2	97403	COVER		EA	1
1	48	XBOZZ		MS51007-11	96906	GASKET, RUBBER	CYY	EA	1
1	49	PAOZZ	4130-00-105-9292	13214E3699-2	97403	FILTER, AIR		EA	1
1	50	XBOZZ		13220E6695	97403	CASING	CYY	EA	1
1	51	PAOZZ	5305-00-984-6195	MS35206-247	96906	SCREW, MACHINE		EA	5
1	52	PAOZZ	5310-00-045-3299	MS35338-42	96906	WASHER, LOCK		EA	4
1	53	PAOZZ	5310-00-081-8087	MS21044N06	96906	NUT, SELF-LOCKING		EA	4
1	54	PAOZZ	5305-00-068-0505	MS90726-5	96906	SCREW, CAP, HEXAGON HEAD		EA	9
1	55	PAOZZ	5310-00-809-4058	MS27183-10	96906	WASHER, FLAT		EA	9
1	56	XBOZZ		13214E3386	97403	PLATE, BOTTOM		EA	1
1	57	PAOZZ	4730-00-007-9399	13211E8178	97403	PLUG, PIPE		EA	4
1	58	XBOZZ		13211E8273	97403	GASKET	CYX	EA	1
1	59	PAOZZ	5305-00-984-6194	MS35206-246	96906	SCREW, MACHINE		EA	2
1	60	XBOZZ		MS51007-7	96906	GASKET		EA	1
1	61	XBOZZ		MS25043-200	96906	COVER, CONNECTOR		EA	1
1	62	PAOZZ	5305-00-432-4169	MS51861-14	96906	SCREW, TAPPING		EA	4
1	63	XBOZZ		13216E9517	97403	GUARD, CONDENSER		EA	1
1	64	PAOZZ	5310-00-821-2366	13214E3469	97403	WASHER, FLAT		EA	8
1	65	PAOZZ	5305-00-993-1848	MS35207-265	96906	SCREW, MACHINE		EA	8
1	66	PAOZZ	5355-00-171-2442	13217E6816	97403	KNOB	CYY	EA	1
1	67	PAOZZ	5310-00-596-7691	MS35335-32	96906	WASHER, LOCK		EA	1
1	68	PAOZZ	5305-00-889-2997	MS35206-215	96906	SCREW, MACHINE		EA	1
1	69	XBOZZ		13211E8215	97403	PLATE, INSTRUCTION		EA	1
1	70	PAOZZ	5305-00-984-6195	MS35206-247	96906	SCREW, MACHINE		EA	8
1	71	PAOZZ	5310-00-045-3299	MS35338-42	96906	WASHER, LOCK		EA	8
1	72	PAOZZ	5310-00-809-8544	MS27183-7	96906	WASHER, FLAT		EA	8
1	73	XBOZZ		13214E3556	97403	GUARD, FAN		EA	1
1	74	PAOZZ	5320-00-882-8388	13214E3789-3	97403	RIVET, SOLID		EA	2
1	75	XBOZZ		13218E7078	97403	PLATE, INSTRUCTION		EA	1
1	76	PAOZZ	5305-00-984-6195	MS35206-247	96906	SCREW, MACHINE		EA	5
1	77	PAOZZ	5310-00-045-3299	MS35338-42	96906	WASHER, LOCK		EA	5
1	78	PAOZZ	5310-00-809-8544	MS27183-7	96906	WASHER, FLAT		EA	5
1	79	XBOZZ		13214E3544	97403	SCREEN, METAL		EA	1
1	80	XBOZZ		13214E3527	97403	BRACKET, MOUNTING		EA	1
1	81	XBOZZ		MS3367-3-9	96906	STRAP, TIEDOWN		EA	2



(1) ILLUSTRATION (A) FIG NO	(B) ITEM NO	(2) SMR CODE	(3) FEDERAL STOCK NUMBER	(4) PART NUMBER	(5) FSCM	TMS-4120-355-24P (6) DESCRIPTION	USABLE ON CODE	(7) U/M	(8) QTY INC IN UNIT
1	82	XBOZZ		13220E8465	97403	COVER, RELAY		EA	1
1	83	PAOZZ	5945-00-482-5771	13216E6240	97403	RELAY, ELECTROMAGNET		EA	1
1	84	XBOZZ		13221E7432-2	97403	COMPONENT ASSEMBLY		EA	1
1	85	PAOZZ	5340-00-550-5942	MS21919WDG29	96906	CLAMP, LOOP		EA	2
1	86	PAOZZ	5305-00-984-6195	MS35206-247	96906	SCREW, MACHINE		EA	2
1	87	PAOZZ	5310-00-809-8544	MS27183-7	96906	WASHER, FLAT		EA	2
1	88	XBOZZ		13216E6243-1	97403	CAP, INSULATOR		EA	1
1	89	XBOZZ		13216E6244-2	97403	RETAINER, CAPACITOR		EA	1
1	90	PAOZZ	5905-00-048-8719	RCR32G153KM	81349	RESISTOR, FIXED		EA	1
1	91	PAOZZ		13214E3531	97403	CLAMP, LOOP		EA	2
1	92	PAOZZ	5305-00-984-6194	MS35206-246	96906	SCREW, MACHINE		EA	2
1	93	PAOZZ	5310-00-811-3494	MS21044N08	96906	NUT, SELF-LOCKING		EA	2
1	94	PAOZZ	5910-00-927-2738	13214E3529-1	97403	CAPACITOR, FIXED		EA	1
1	95	PAOZZ	5910-00-055-0528	13214E3529-2	97403	CAPACITOR, FIXED, PAPER		EA	1



TM5-4120-355-24P/2

Figure 2. Fans and motor.

TMS-4120-355-24P		CHANGE 1		(4)	(5)	(6)		(7)	(8)	
(1)	(2)	(3)								
ILLUSTRATION			FEDERAL	PART		DESCRIPTION			QTY	
(A)	(B)		STOCK	NUMBER	FSCM		USABLE ON CODE	U/M	INC	
FIG	ITEM	SMR	NUMBER	NUMBER					IN	
NO	NO	CODE							UNIT	
GROUP 02 - BLOWER MOTOR AND BLOWER FANS										
2	1	PBOZZ	4140-00-106-2488	13214E3559	97403	IMPELLER, FAN		EA	1	
2	2	PAOZZ	5305-00-984-6194	MS35206-246	96906	SCREW, MACHINE		EA	6	
2	3	PAOZZ	5310-00-821-2366	13214E3469	97403	WASHER, FLAT		EA	6	
2	4	XBOZZ		13214E3552	97403	BRACKET, MOUNTING		EA	1	
2	5	PAOZZ	5310-01-036-4687	MS27130-S15K	96906	NUT, PLAIN, BLING RIVET	CYX	EA	8	
2	5	PAOZZ	5310-00-466-2481	MS27130A15	96906	NUT, PLIAN	CYY	EA	8	
2	6	XBOZZ		MS20066-145	96906	KEY, MACHINE		EA	1	
2	7	PAOZZ	6105-00-103-2165	13214E3728-2	97403	MOTOR, ALTERNATING CURRENT	CYX	EA	1	
2	7	PAOZZ	6105-00-103-2164	13214E3728-1	97403	MOTOR, ALTERNATING CURRENT	CYY	EA	1	
2	8	PAOZZ	5310-00-935-9021	MS51943-35	96906	NUT, SELF-LOCKING		EA	4	
2	9	PAOZZ	5310-00-080-6004	MS27183-14	96906	WASHER, FLAT		EA	4	
2	10	XBOZZ		MS20066-143	96906	KEY, MACHINE		EA	1	
2	11	PAOZZ	5305-00-269-3212	MS90725-61	96906	SCREW, MACHINE	CYY	EA	4	
2	12	PBOZZ	4140-00-169-6425	13214E3558	97403	IMPELLER, FAN		EA	1	
2	13	PAOZZ		13214E3547	97403	RING, INLET, FAN		EA	1	
2	14	XBOZZ		13217E5636	97403	SPACER, SLEEVE		EA	2	
2	15	PAOZZ	5306-00-225-8503	MS90725-39	96906	SCREW, CAP, HEXAGON HEAD		EA	2	
2	16	PAOZZ	5310-00-081-4219	MS27183-12	96906	WASHER, FLAT		EA	2	
2	17	PAOZZ	5310-00-407-9566	MS35338-45	96906	WASHER, LOCK		EA	2	
2	18	PAOZZ	5310-00-821-2366	13214E3469	97403	WASHER, FLAT		EA	8	
2	19	PAOZZ	5310-00-993-1848	MS35207-265	96906	SCREW, MACHINE		EA	8	

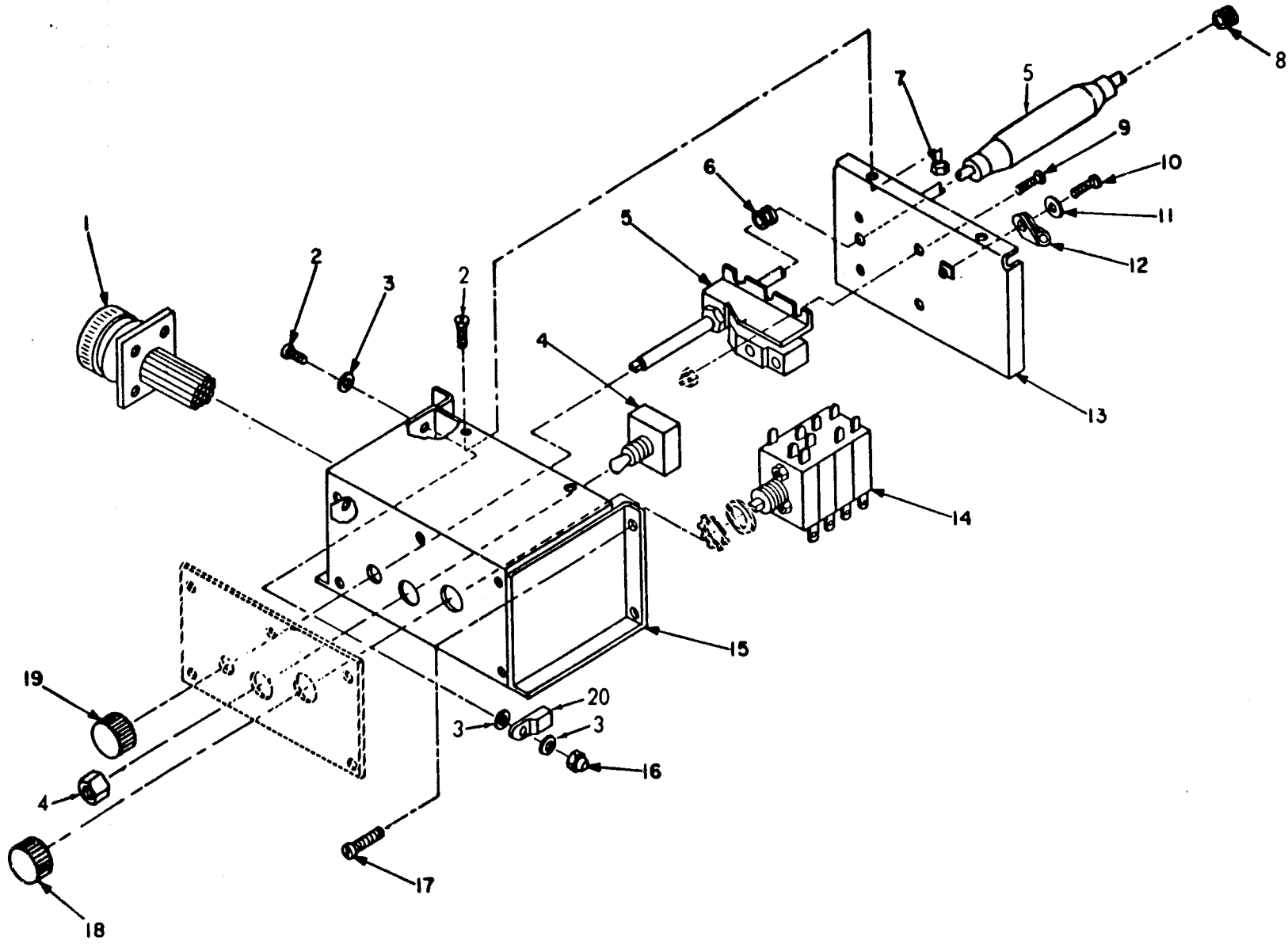


Figure 3. Control panel.

TM5-4120-355-24P/3

TMS-4120-355-24P		CHANGE 1							
(1)	(2)	(3)	(4)	(5)	(6)		(7)	(8)	
ILLUSTRATION		FEDERAL			DESCRIPTION			QTY	
(A)	(B)	STOCK	PART					INC	
FIG	ITEM	NUMBER	NUMBER	FSCM		USABLE ON CODE	U/M	IN	UNIT
NO	NO	SMR							
NO	NO	CODE	NUMBER						
GROUP 03 - CONTROL PANEL									
3	1	PAOZZ	5305-00-989-7435	13211E8399C28-17	97403	CONNECTOR, RECEPTACLE	EA	1	
3	2	PAOZZ	5305-00-989-7435	MS35207-264	96906	SCREW, MACHINE	EA	1	
3	3	PAOZZ	5310-00-014-5850	MS28183-42	96906	WASHER, FLAT	EA	3	
3	4	PAOZZ	5930-00-683-1628	MS24523-22	96906	SWITCH, TOGGLE	EA	1	
3	5	PAOZZ	5930-00-923-4176	13211E8301-1	97403	THERMOSTAT	EA	1	
3	6	PAOZZ	5325-00-286-6047	MS35409-1	96906	GROMMET, RUBBER	EA	1	
3	7	PAOZZ	5310-00-889-2549	MS21045-08	96906	NUT, SELF-LOCKING	EA	4	
3	8	PAOZZ	5325-00-254-4718	13211E8222	97403	GROMMET	EA	1	
3	9	PAOZZ	5305-00-984-6193	MS35206-245	96906	SCREW, MACHINE	EA	4	
3	10	PAOZZ	5305-00-989-7434	MS35207-263	96906	SCREW, MACHINE	EA	1	
3	11	PAOZZ	5310-00-045-3296	MS35338-43	96906	WASHER, LOCK	EA	5	
3	12	PAOZZ	5340-00-103-2976	MS21105-6	96906	CLAMP, LOOP	EA	1	
3	13	XBOZZ		13218E9511	97403	PANEL, REAR	EA	1	
3	14	PAOZZ	5930-00-236-2351	13216E6201-1	97403	SWITCDH, ROTARY	EA	1	
3	15	XBOZZ		13218E9909	97403	PANEL, MOUNTING	EA	1	
3	16	PAOZZ	5310-00-061-7326	MS21045-3	96906	NUT, SELF-LOCKING	EA	1	
3	17	PAOZZ	5305-00-984-6212	MS35206-265	96906	SCREW, MACHINE	EA	4	
3	18	PBOZZ	5355-00-579-2896	MS25165-1	96906	KNOB	EA	1	
3	19	PBOZZ	5355-00-051-9146	MS25167P1B	96906	KNOB	EA	1	
3	20	PAOZZ	5340-00-105-8328	MS21104D6	96906	CLAMP, LOOP	EA	6	

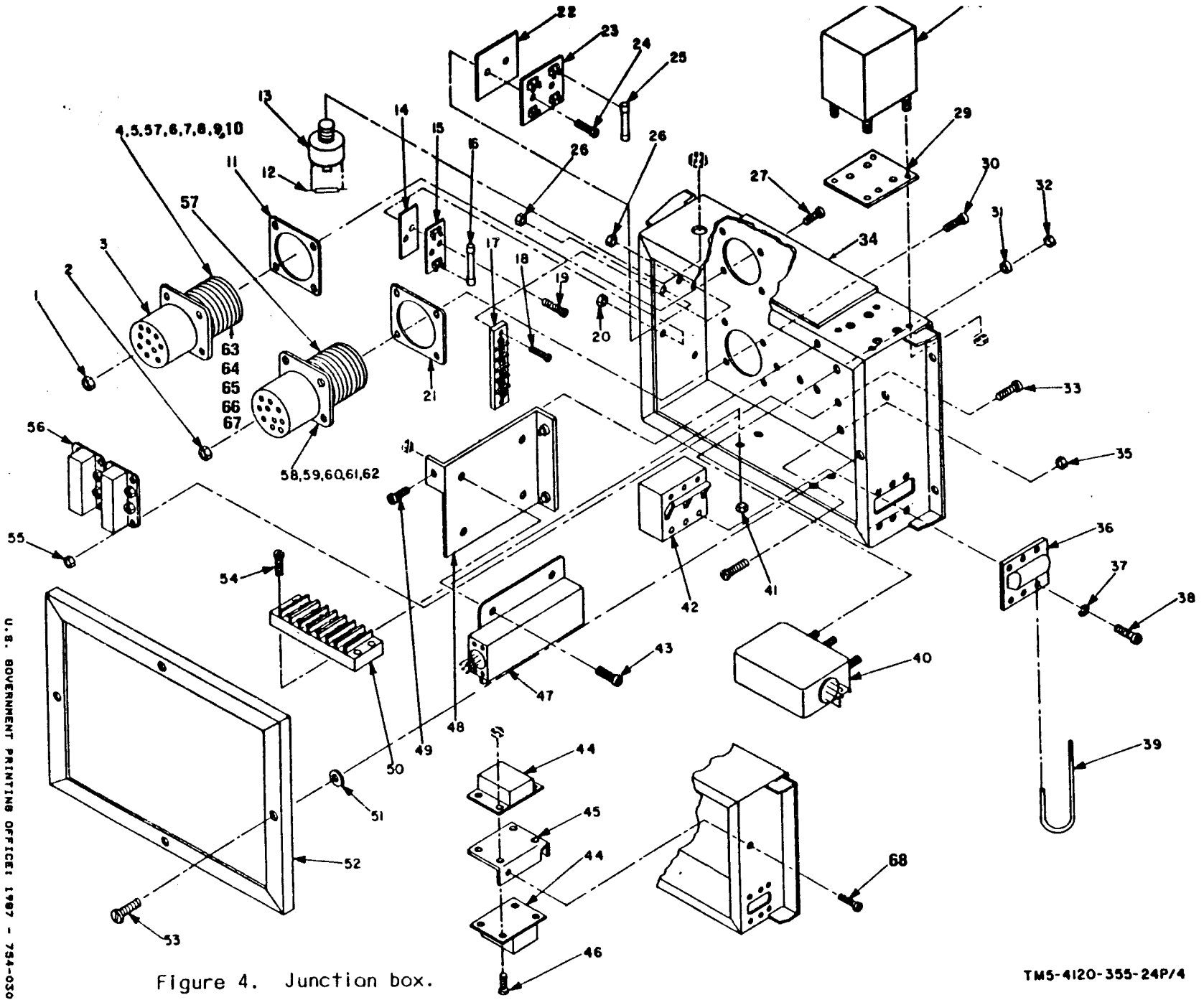


Figure 4. Junction box.

TMS-4120-355-24P/4

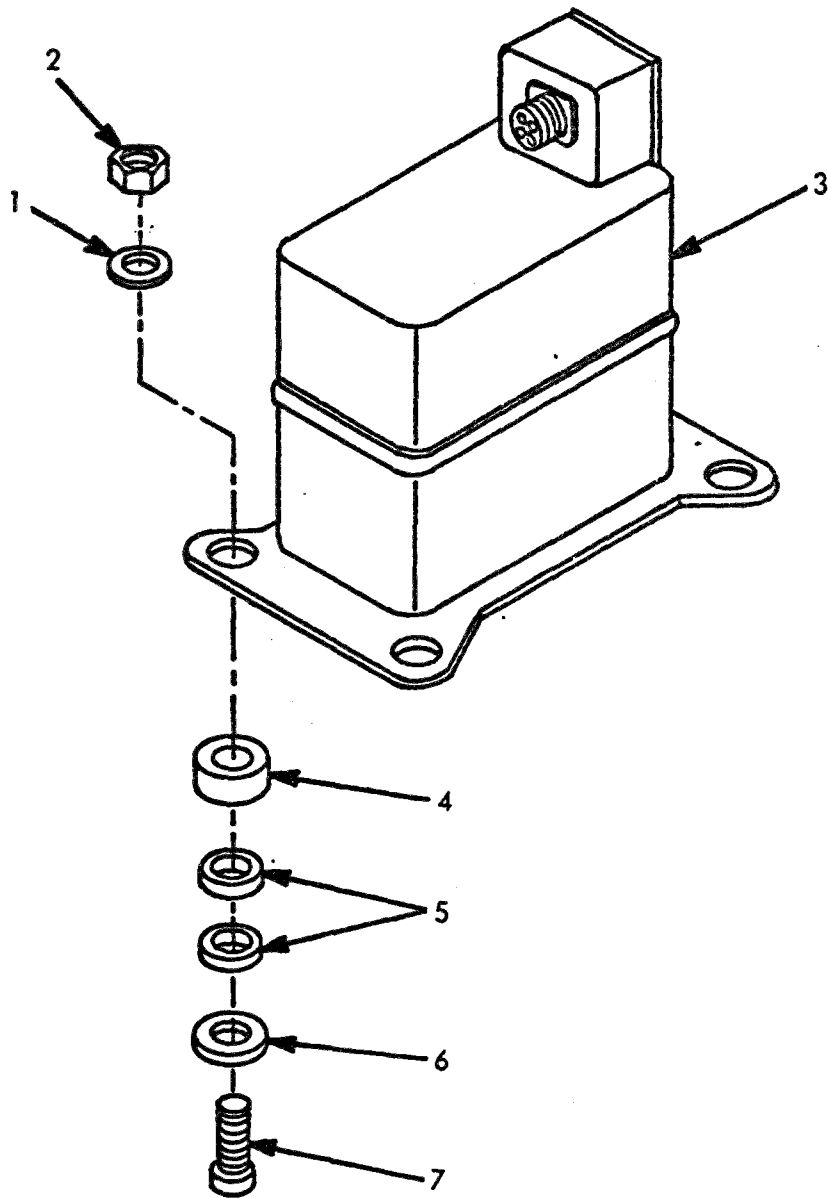
U.S. GOVERNMENT PRINTING OFFICE: 1987 - 754-036/40151

PIN NUMBER : 044220-001

(1) ILLUSTRATION (A) FIG NO	(B) ITEM NO	(2) SMR CODE	(3) FEDERAL STOCK NUMBER	(4) PART NUMBER	(5) FSCM	(6) DESCRIPTION	USABLE ON CODE	(7) U/M	(8) QTY INC IN UNIT
GROUP 04 - JUNCTION BOX									
4	1	PAOZZ	5310-00-811-3494	MS21044N08	96906	NUT, SELF-LOCKING	CYX	EA	4
4	2	PAOZZ	5310-00-081-8087	MS21044N06	96906	NUT, SELF-LOCKING		EA	4
4	3	XBOZZ		13218E9903	97403	WIRING HARNESS	CYX	EA	1
4	4	PAOZZ	5940-00-143-4794	MS25036-112	96906	. TERMINAL LUG	CYX	EA	1
4	5	PAOZZ	5999-00-914-2318	13216E6191-2	97403	. TERMINAL LUG	CYX	EA	3
4	6	PAOZZ	5940-00-143-4780	MS25036-100	96906	. TERMINAL LUG	CYX	EA	3
4	7	PAOZZ	5940-00-143-4774	MS25036-153	96906	. TERMINAL LUG	CYX	EA	6
4	8	PBOZZ	5935-00-806-4587	MS3102R32-6P	96906	. CONNECTOR, PLUG	CYX	EA	1
4	9	PAOZZ	5940-00-283-5280	MS25036-106	96906	. TERMINAL LUG	CYX	EA	7
4	10	PAOZZ	5940-00-143-4775	MS25036-156	96906	. TERMINAL LUG	CYX	EA	1
4	11	XBOZZ		MS51007-10	96906	GASKET		EA	1
4	12	PAOZZ	5910-00-109-1987	CK63AY103M	81349	CAPACITOR, FIXED	CYX	EA	1
4	12	PBOZZ		13220E6636	97403	CAPACITOR	CYY	EA	1
4	13	PAOZZ	5961-00-106-5259	13214E3652	97403	RECTIFIER		EA	1
4	14	XBOZZ		13214E3814	97403	INSULATOR PLATE		EA	1
4	15	XBOZZ		13214E3811	97403	INSULATOR PLATE		EA	1
4	16	PAOZZ	5920-00-243-9331	F09A250V2A	81349	FUSE, CARTRIDGE		EA	2
4	17	XBOZZ		13214E3804	97403	TERMINAL BOARD		EA	1
4	18	PAOZZ	5305-00-889-3001	MS35206-231	96906	SCREW, MACHINE		EA	2
4	19	PAOZZ	5305-00-059-4552	MS35190-237	96906	SCREW, MACHINE		EA	2
4	20	PAOZZ	5310-00-081-8087	MS21044N06	96906	NUT, SELF-LOCKING		EA	2
4	21	XBOZZ		MS51007-12	96906	GASKET	CYX	EA	1
4	22	XBOZZ		13214E3726	97403	INSULATOR, PLATE		EA	1
4	23	XBOZZ		13211E3784	97403	FUSEHOLDER		EA	1
4	24	PAOZZ	5305-00-059-4552	MS35190-237	96906	SCREW, MACHINE		EA	2
4	25	PAOZZ	5920-00-939-5442	13211E3785	97403	FUSE, CARTRIDGE		EA	1
4	26	PAOZZ	5310-00-081-8087	MS21044N06	96906	NUT, SELF-LOCKING		EA	2
4	27	PAOZZ	5310-00-984-6195	MS35206-247	96906	SCREW, MACHINE	CYX	EA	4
4	28	PAOZZ	5950-00-112-3352	13214E3818-1	97403	TRANSFORMER, POWER	CYX	EA	1
4	29	XBOZZ		13214E3685-2	97403	INSULATOR, PLATE		EA	1
4	30	PAOZZ	5305-00-984-4992	MS35206-232	96906	SCREW, MACHINE		EA	4
4	31	XBOZZ		MS9241-007	96906	PACKING, PREFORMED		EA	3
4	32	PAOZZ	5310-00-081-8087	MS21044N06	96906	NUT, SELF-LOCKING		EA	4
4	33	PAOZZ	5305-00-989-7435	MS35207-264	96906	SCREW, MACHINE	CYY	EA	8
4	34	XBOZZ		13218E9895-1	97403	BOX, JUNCTION	CYX	EA	1
4	34	XBOZZ		13218E9914	97403	BOX	CYY	EA	1
4	35	PAOZZ	5310-00-877-5797	MS21044NS	96906	NUT, SELF-LOCKING	CYY	EA	8
4	36	XBOZZ		13220E7993	97403	COVER		EA	1
4	37	PAOZZ	5310-00-579-0079	MS35333-37	96906	WASHER, LOCK		EA	6
4	38	PAOZZ	5305-00-984-4983	MS35206-226	96906	SCREW, MACHINE		EA	6
4	39	XBOZZ		13220E5385-2	97403	ARM, ACTIVATOR		EA	1
4	40	PAOZZ	5945-01-081-4710	13214E3487-1	97403	RELAY, PHRASE SEQUENCE	CYX	EA	1

(1) ILLUSTRATION (A) FIG NO	(B) ITEM NO	(2) SMR CODE	(3) FEDERAL STOCK NUMBER	(4) PART NUMBER	(5) FSCM	(6) DESCRIPTION	USABLE ON CODE	(7) U/M	(8) QTY INC IN UNIT
4	41	PAOZZ	5310-00-877-5797	MS21044N3	96906	NUT, SELF-LOCKING		EA	4
4	42	PAOZZ		13216E6205-8	97403	CIRCUIT BREAKER	CYX	EA	1
4	42	PAOZZ	5925-00-009-3005	13216E6206-4	97403	CIRCUIT BREAKER	CYY	EA	1
4	43	PAOZZ	5305-00-984-4989	MS35206-228	96906	SCREW, MACHINE	CYY	EA	4
4	44	PAOZZ	5945-00-549-6348	MS24192D1	96906	RELAY	CYY	EA	1
4	45	XBOZZ		13218E9897	97403	BRACKET, MOUNTING	CYY	EA	10
4	46	PAOZZ	5305-00-984-6193	MS35206-245	96906	SCREW, MACHINE	CYY	EA	30
4	47	PAOZZ	5945-00-007-7669	13216E6182-3	97403	RELAY, TIME DELAY		EA	1
4	48	XBOZZ		13218E9947	97403	BRACKET, MOUNTING	CYX	EA	1
4	49	PAOZZ	5305-00-837-3343	MS24693S28	96906	SCREW, MACHINE		EA	1
4	50	XBOZZ		39TB8	81349	TERMINAL BOARD	CYY	EA	1
4	51	PAOZZ	5310-00-880-9344	12-11014-12	94222	WASHER, RETAINING		EA	4
4	52	XBOZZ		13214E3412	97403	COVER, BOX		EA	1
4	53	PAOZZ	5305-00-163-8348	13214E3744-1	97403	SCREW, PANEL	CYX	EA	4
4	53	PAOZZ	5305-00-356-6102	13214E3744V8	97403	SCREW	CYY	EA	4
4	54	PAOZZ	5305-00-984-6213	MS35206-266	96906	SCREW, MACHINE		EA	4
4	55	PAOZZ	5310-00-877-5797	MS21044N3	96906	NUT, SELF-LOCKING		EA	8
4	56	PAOZZ	5945-00-549-6348	MS24192D1	96906	RELAY, ARMATURE	CYX	EA	2
4	56	PAOZZ	5945-00-007-7668	13216E6182-2	97403	RELAY, TIME, DELAY	CYY	EA	1
4	57	XBOZZ		13218E9898	97403	WIRING HARNESS	CYX	EA	1
4	58	PROZZ	5935-00-725-7248	MS3102R28-12S	96906	.CONNECTOR PLUG	CYX	EA	1
4	59	PAOZZ	5940-00-283-5280	MS25036-106	96906	.TERMINAL LUG	CYX	EA	2
4	60	PAOZZ	5940-00-143-4780	MS25036-108	96906	.TERMINAL LUG	CYX	EA	1
4	61	PAOZZ	5940-00-143-4774	MS25036-153	96906	.TERMINAL LUG	CYX	EA	9
4	62	PAOZZ	5940-00-150-4682	13216E6192	97403	.TERMINAL LUG	CYX	EA	1
4	63	XBOZZ		13220E6559	97403	WIRING, HARNESS	CYY	EA	1
4	64	PAOZZ	5940-00-143-4780	MS25036-108	96906	.TERMINAL LUG	CYY	EA	2
4	65	PAOZZ	5940-00-143-4774	MS25036-153	96906	.TERMINAL, LUG	CYY	EA	6
4	66	PAOZZ	5945-00-755-2892	MS3102R28-9S	96906	.CONNECTOR RECEPTACLE	CYY	EA	1
4	67	PAOZZ	5940-00-283-5280	MS25036-106	96906	.TERMINAL LUG	CYY	EA	2
4	68	PAOZZ	5305-00-989-7434	MS35206-263	96906	.SCREW, MACHINE		EA	8



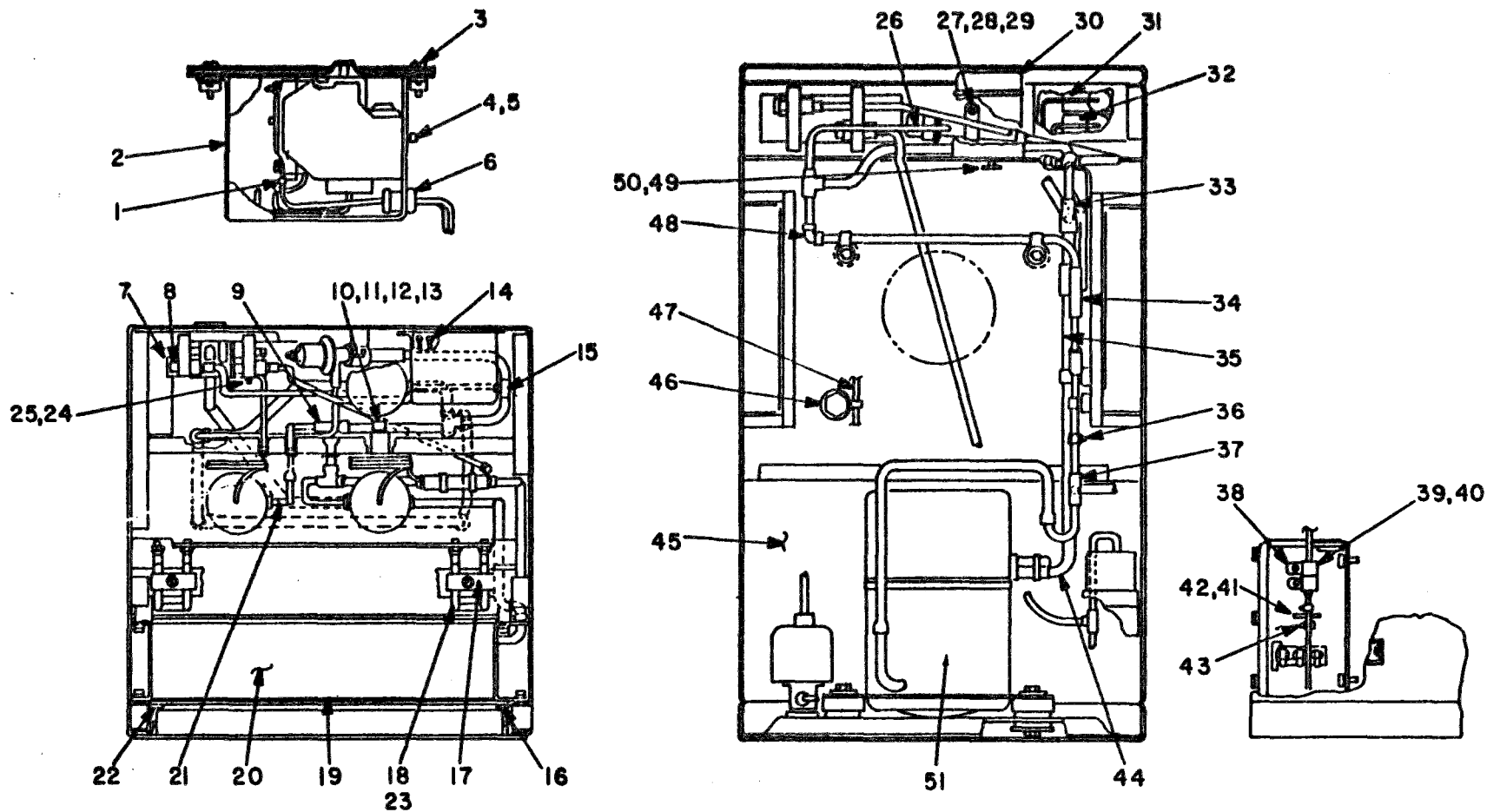


TM5-4120-355-24P/5

Figure 5. Compressor assembly.

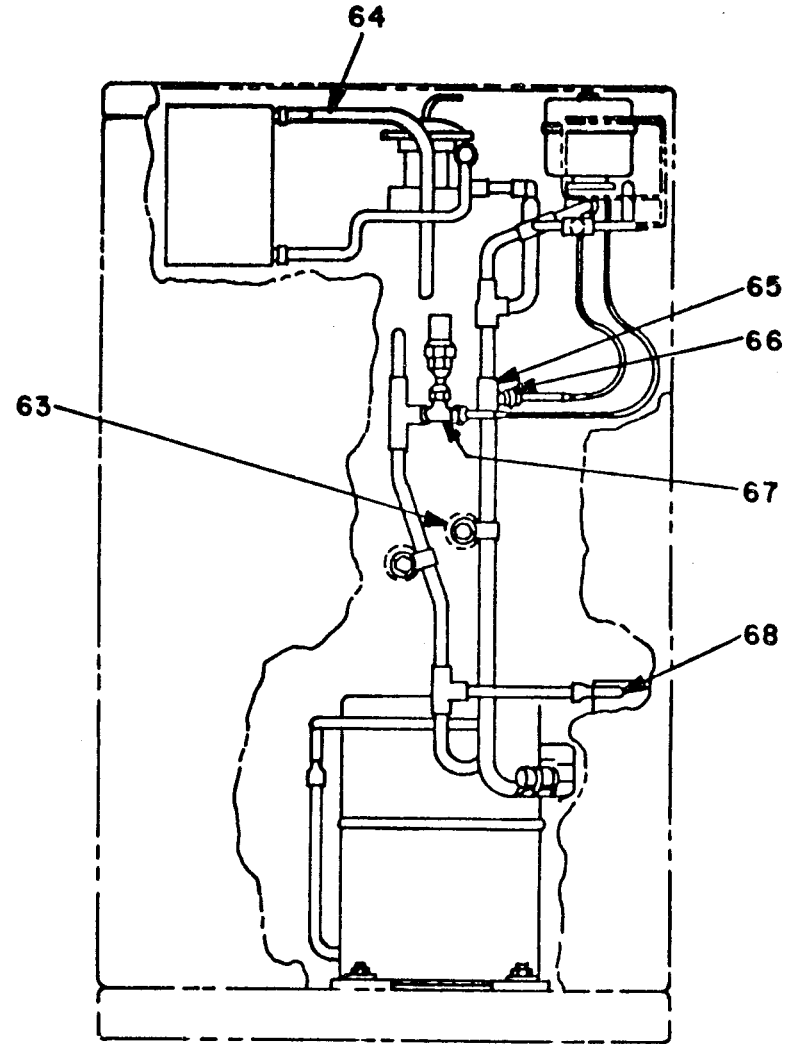
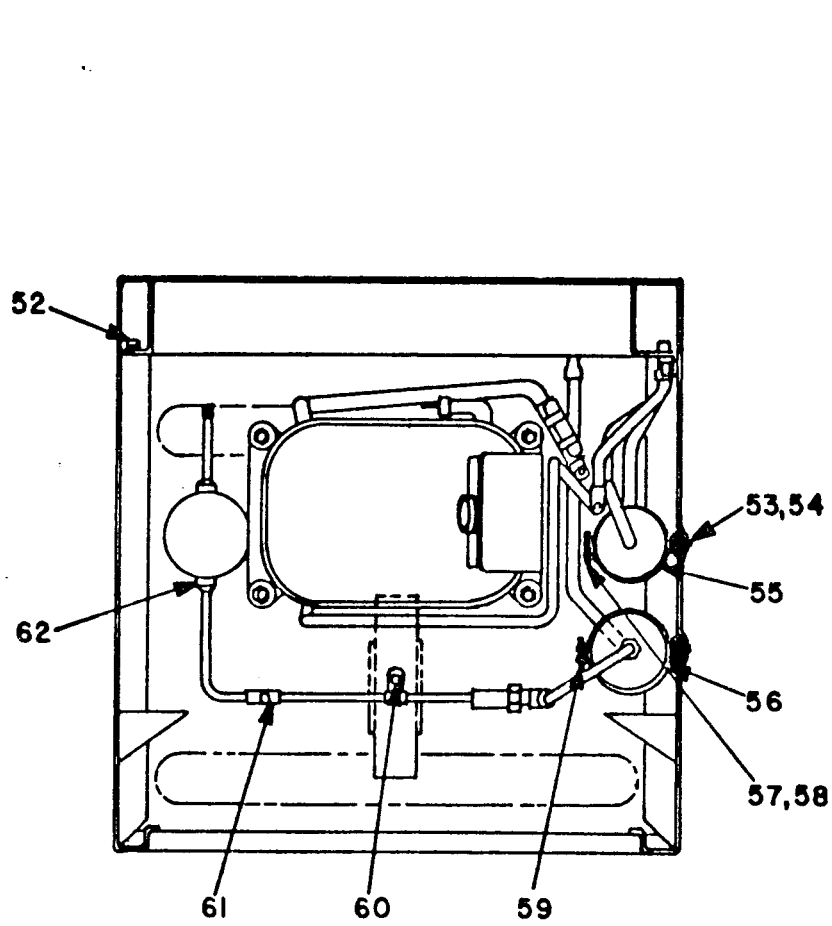
TMS-4120-355-24P

(1) ILLUSTRATION (A) FIG NO	(2) (B) ITEM NO	(3) SMR CODE	(3) FEDERAL STOCK NUMBER	(4) PART NUMBER	(5) FSCM	(6) DESCRIPTION	USABLE ON CODE	(7) U/M	(8) QTY INC IN UNIT
GROUP 05 - COMPRESSOR ASSEMBLY									
5	1	PAOZZ	5310-00-087-7493	MS27183-13	96906	WASHER, FLAT		EA	4
5	2	PAOZZ	5310-00-814-0673	MS51943-33	96906	NUT, SELF-LOCKING		EA	4
5	3	PAFZZ		MIL-J-6-VBC-420	64731	COMPRESSOR	CYX	EA	1
5	3	PAFZZ		MIL-J-6-VBC-610	64731	COMPRESSOR	CYY	EA	1
5	4	XBOZZ		13214E3659	97403	SPACER		EA	4
5	5	PAOZZ	5310-00-401-3365	13211E8170	97403	WASHER, SHOULDER		EA	8
5	6	PAOZZ	5310-01-032-4875	13214E3476	97403	WASHER, FLAT		EA	4
5	7	PAOZZ	5306-00-235-4727	13211E8166	97403	SCREW, CAP, HEXAGON HEAD		EA	4



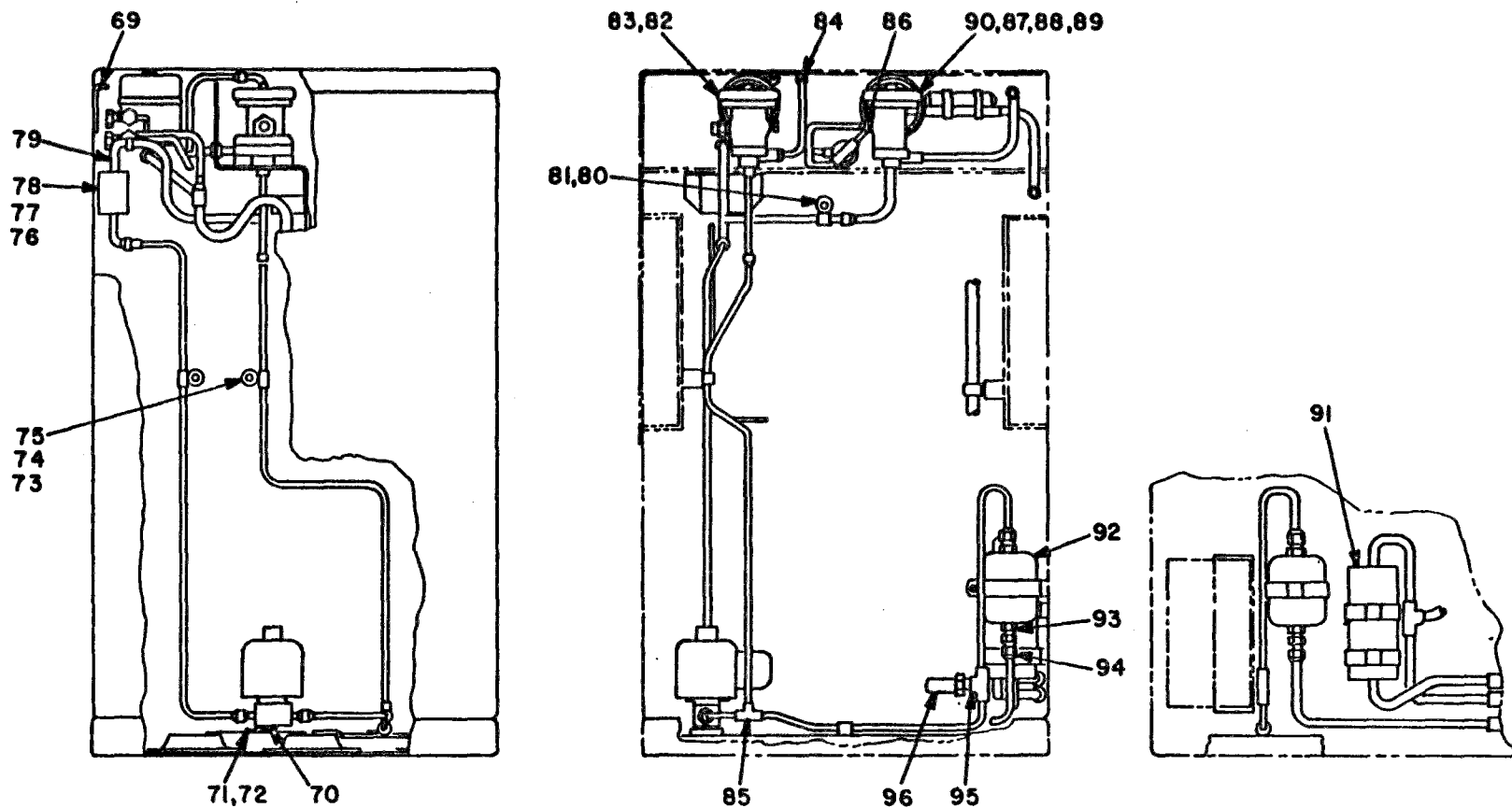
TM5-4120-355-24P/6①

Figure 6. Evaporator, heater, Indicators, piping, condenser, dehydrator, and valves  
(sheet 1 of 4)



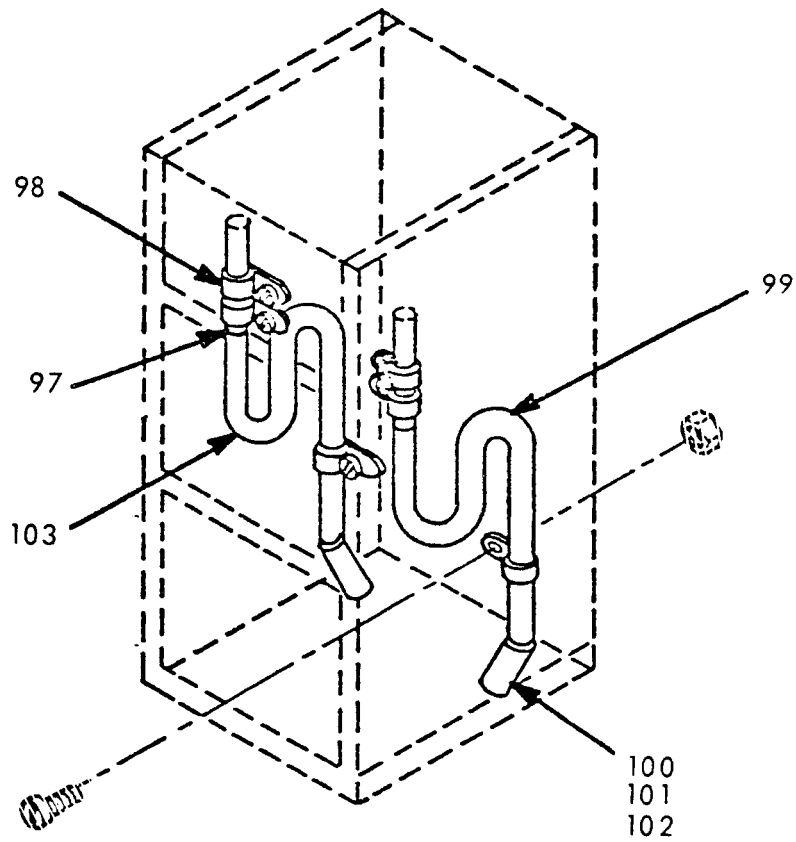
TM5-4120-355-24P/6 (2)

Figure 6. Evaporator, heater, Indicators, piping, condenser, dehydrator, and valves (sheet 2 of 4).



TM5-4120-355-24P/6③

Figure 6. Evaporator, heater, indicators, piping, condenser, dehydrator, and valves (sheet 3 of 4).



TM5-4120-355-24P (5)

Figure 6. Evaporator, heater, indicators, piping, condenser, dehydrator, and valves (sheet 4 of 4) .

(1) ILLUSTRATION (A) FIG NO	(2) (B) ITEM NO	(3) SMR CODE	(4) FEDERAL STOCK NUMBER	(5) PART NUMBER	(6) FSCM	DESCRIPTION	USABLE ON CODE	(7) U/M	(8) QTY INC IN UNIT
						GROUP 06-- EVAPORATOR, HEATRE INDICATORS, PIPING, CONDENSER, DEHYDRATOR AND VALVES			
6	1	PAOZZ	4130-00-056-4593	13211E8227	97403	CLIP		EA	6
6	2	XBOZZ		13214E3578-2	97403	BOX, SWITCH		EA	1
6	3	PAOZZ	5305-00-984-4992	MS35206-232	96906	SCREW, MACHINE		EA	4
6	4	PAOZZ	5305-00-984-4984	MS35206-227	96906	SCREW, MACHINE		EA	4
6	5	PAOZZ	5310-00-045-3299	MS35338-42	96906	WASHER, LOCK	CYY	EA	4
6	6	XBOZZ		13211E8416	97403	BUSHING	CYY	EA	1
6	7	XBFZZ		13218E6975	97403	VALVE		EA	2
6	8	PBOZZ	4730-01-893-3645	13219E9540	97403	CAP AND CHAIN		EA	1
6	9	PAFZZ	4730-00-815-5664	13211E4043-7	97403	TEE		EA	3
6	10	XBOZZ		13214E3372-1	97403	SPACER, SLEEVE	CYY	EA	1
6	11	PAOZZ	5310-00-582-5965	MS35338-44	96906	WASHER, LOCK		EA	2
6	12	PAOZZ	5325-00-995-3441	MS35207-269	96906	SCREW, MACHINE		EA	5
6	13	PAOZZ	5310-00-077-5796	MS21044D3	96906	NUT, SELF-LOCKING		EA	5
6	14	PAOZZ	5325-00-206-6047	MS35489-1	96906	GROMMET		EA	3
6	15	PBFZZ	4730-00-818-7778	13211E4043-6	97403	TEE	CYX	EA	2
6	16	XBOZZ		13220E5415	97403	BRACKET, MOUNTING		EA	1
6	17	PAOZZ	5340-01-039-0103	13214E3416	97403	CLAMP, RIM CLENCHING		EA	6
6	18	PAOZZ	4540-00-110-3729	13214E3561	97403	HEATING ELEMENT		EA	6
6	19	PBOZZ		13220E5413-1	97403	MIST ELMINATOR		EA	1
6	20	PBFZZ	4130-00-106-1975	13214E3554	97403	COIL, EVAPORATOR		EA	1
6	21	PAFZZ	4710-00-203-3171	WWT775-1-4	81348	TUBING, COPPER		FT	10
6	22	XBOZZ		13220E5414	97403	BRACKET, MOUNTING		EA	1
6	23	XBOZZ		13214E3629-2	97403	SUPPORT, HEATER		EA	1
6	24	PAOZZ	5310-00-263-2862	MS21045C3	96906	NUT, SELF-LOCKING	CYY	EA	4
6	25	XBOZZ		NAS3103C5-10	80205	U BOLT		EA	2
6	26	PAFZZ	4820-00-106-1973	13214E3742	97403	REGULATOR, PRESSURE		EA	1
6	27	PAOZZ	5340-00-106-0551	MS21104D10	96906	CLAMP, LOOP		EA	3
6	28	XBOZZ		13211E8376	97403	SPACER, SLEEVE		EA	5
6	29	XBOZZ		13214E3372-2	97403	SPACER, SLEEVE		EA	4
6	30	XBOZZ		13220E6827	97403	WIRING HARNESS	CYX	EA	1
6	30	XBOZZ		13220E6561	97403	WIRING HARNESS	CYY	EA	1
6	31	PAFZZ	5930-00-275-7800	13211E8404	97403	SWITCH, PRESSURE		EA	1
6	32	PAFZZ	5930-00-312-4115	13214E3794	97403	SWITCH, PRESSURE		EA	1
6	33	PAFZZ	4730-00-950-5277	13211E4043-14	97403	TEE		EA	1
6	34	PAFZZ	4730-00-926-9649	13214E3411-1	97403	TEE		EA	1
6	35	PAFZZ	4710-00-424-2694	WWT775-1-2	81348	TUBING, COPPER		FT	10
6	36	PAOZZ	5340-00-009-5736	13214E3743-1	97403	CLAMP, LOOP		EA	1
6	37	PAOZZ	4730-00-263-6460	MS35929-3	96906	TEE, TUBE, STRAIGHT	CYY	EA	2
6	38	PAOZZ	5305-00-984-6196	MS35206-248	96906	SCREW, MACHINE		EA	2
6	39	PAOZZ	5340-00-490-4415	MS21104C3	96906	CLAMP, LOOP		EA	2
6	40	XBOZZ		13211E8376-5	97403	SPACER, SLEEVE		EA	2

TMS-4120-355-24P									
(1)	(2)	(3)	(4)	(5)	(6)		(7)	(8)	
ILLUSTRATION									
(A)	(B)	FEDERAL			DESCRIPTION			QTY	
FIG	ITEM	SMR	STOCK	PART				INC	
NO	NO	CODE	NUMBER	NUMBER	FSCM	USABLE ON CODE	U/M	IN	UNIT
6	41	XBOZZ		13220E5386	97403		EA	1	
6	42	PAOZZ	5310-00-902-6676	MS21083N3	96906	CYY	EA	2	
6	43	XBOZZ		13217E6817	97403		EA	2	
6	44	PAFZZ	4710-00-554-8692	WWT775-3-4	81348		FT	5	
6	45	PAFZZ	4130-00-106-1976	13214E3553	97403		EA	1	
6	46	PAOZZ	5340-00-106-0549	MS21104D4	96906		EA	3	
6	47	PAFZZ	4710-00-203-3172	WWT775-3-8	81348		FT	10	
6	48	PAFZZ	4730-00-837-0685	MS917-3	96906		EA	1	
6	49	PAOZZ	5310-00-045-3299	MS35338-42	96906		EA	2	
6	50	PAOZZ	5305-00-984-6191	MS35206-243	96906		EA	2	
6	51	PAFZZ	6830-00-837-9927	BBF1421TYPE22	81348		LB	5	
6	52	PAOZZ	5305-00-087-0259	MS9122-05	96906		EA	6	
6	53	PAOZZ	5305-00-993-2738	MS35207-280	96906		EA	3	
6	54	PAOZZ	5310-00-582-5965	MS35338-44	96906		EA	6	
6	55	PAOZZ		13211E8406-2	97403		EA	1	
6	56	PAOZZ		13211E8406-1	97403		EA	1	
6	57	PAOZZ		MS35207-285	96906		EA	1	
6	58	PAOZZ	5310-00-043-0520	MS35650-3252	96906		EA	1	
6	59	PAOZZ	5305-00-958-0588	MS35207-287	96906		EA	1	
6	60	PAOZZ	5305-00-989-7435	MS35207-264	96906		EA	4	
6	61	PAFZZ	4730-00-257-2163	MS35929-2	96906		EA	1	
6	62	XBOZZ		13211E3799-1	97403		EA	4	
6	63	PAOZZ	5340-00-106-0550	MS21104D8	96906		EA	4	
6	64	PAFZZ	4710-00-203-3174	WWT775-5-8	81348		FT	5	
6	65	PAFZZ	4730-00-821-9184	13211E4043-12	97403		EA	1	
6	66	PAFZZ	4730-01-037-4919	MS35919-22	96906		EA	1	
6	67	PAFZZ	4730-00-289-0365	SAEJ513	81343		EA	1	
6	68	PAFZZ	4730-00-022-1334	MS35928-4	96906		EA	1	
6	69	XBOZZ		13218E6978	97403	CYY	EA	1	
6	70	PAOZZ	5305-00-984-6191	MS35206-243	96906		EA	4	
6	71	XBOZZ		13214E3592-2	97403		EA	1	
6	72	PAOZZ	5305-00-984-6194	MS35206-246	96906		EA	2	
6	73	PAOZZ	5340-01-021-3081	MS21104D38	96906		EA	1	
6	74	XBOZZ		13214E3567	97403		EA	1	
6	75	PAOZZ	5340-00-251-8288	MS21104D34	96906		EA	2	
6	76	XBOZZ		13211E8242	97403		EA	1	
6	77	XBOZZ		13214E3419	97403		EA	1	
6	78	XBOZZ		13211E8255	97403		EA	1	
6	79	PBFZZ	4130-00-073-8404	13211E8218	97403		EA	1	
6	80	PAOZZ	5310-00-821-2366	13214E3469	97403		EA	6	
6	81	XBOZZ		13211E8376-2	97403		EA	1	
6	82	PAOZZ	5305-00-958-0585	MS35207-272	96906	CYY	EA	1	
6	83	PAFZZ	4820-01-038-8231	13214E3785-2	97403		EA	1	
6	84	PAOZZ	5325-00-263-6632	MS35489-6	96906	CYY	EA	1	



(1) ILLUSTRATION (A) FIG NO	(2) (B) ITEM NO	(3) SMR CODE	(3) FEDERAL STOCK NUMBER	(4) PART NUMBER	(5) FSCM	(6) DESCRIPTION	USABLE ON CODE	(7) U/M	(8) QTY INC IN UNIT
6	84	PAOZZ	5325-00-263-6651	MS35489-12	96906	GROMMET	CYX	EA	1
6	85	PAFZZ	4730-00-257-2163	MS35929-2	96906	TEE		EA	3
6	86	PAFZZ	4730-00-189-2737	MS35872-2	96906	NUT, FLARE		EA	2
6	87	PAOZZ	5310-00-080-6004	MS27183-14	96906	WASHER, FLAT		EA	4
6	88	PAOZZ	5310-00-637-9541	MS35338-46	96906	WASHER, LOCK		EA	4
6	89	XBOZZ		13211E8376-3	97403	SPACER, SLEEVE		EA	4
6	90	PAFZZ	4820-01-056-2991	13214E3568-1	97403	VALVE, EXPANSION		EA	1
6	91	XBFZZ		13214E3798-1	97403	RECEIVER, TUBE		EA	1
6	92	PAFZZ	4130-00-478-5724	13214E3557	97403	DEHYDRATOR, DESICCANT		EA	4
6	93	PAFZZ	4730-00-769-3964	13214E3556	97403	REDUCER, TUBE		EA	1
6	94	PAFZZ	4730-00-189-2739	MS35872-3	96906	NUT, FLARE		EA	1
6	95	PAFZZ	4730-00-278-8908	13214E3411-2	97403	TEE		EA	1
6	96	PAFZZ	4820-00-073-8405	13211E8369	97403	VALVE, PRESSURE		EA	1
6	97	PAOZZ		13211E8323	97403	HOSE, DRAIN		EA	2
6	98	PAOZZ	4730-00-908-3194	MS35842-11	96906	CLAMP, LOOP		EA	4
6	99	PAOZZ		13214E3484	97403	TUBE, DRAIN		EA	1
6	100	PAOZZ	5315-00-234-1856	MS24665-155	96906	PIN, COTTER		EA	2
6	101	XBOZZ		13211E8412	97403	SPRING, HELICAL		EA	2
6	102	XBOZZ		13211E8411	97403	BALL, BEARING		EA	2
6	103	PAOZZ		13214E3486	97403	TUBE, DRAIN		EA	1

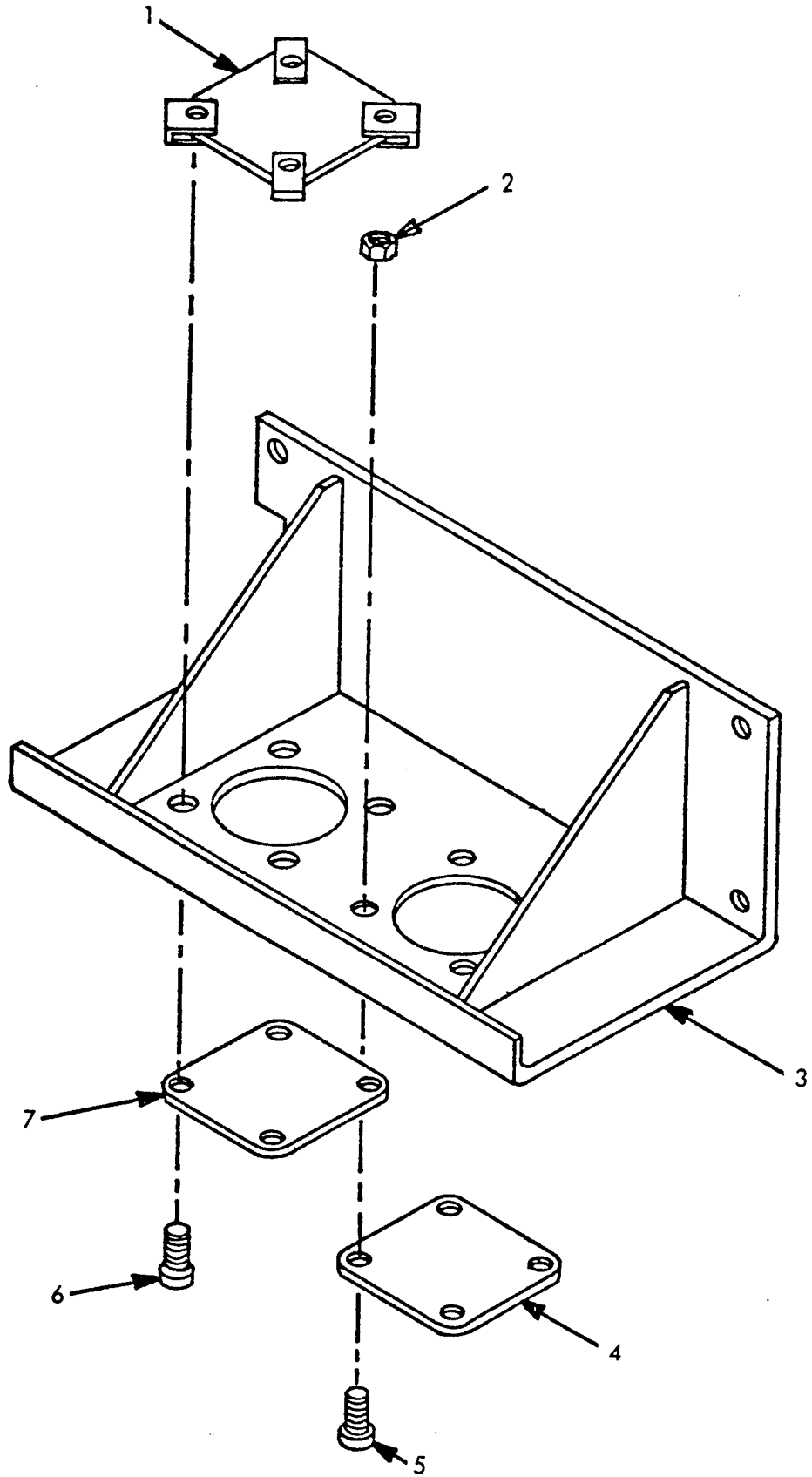
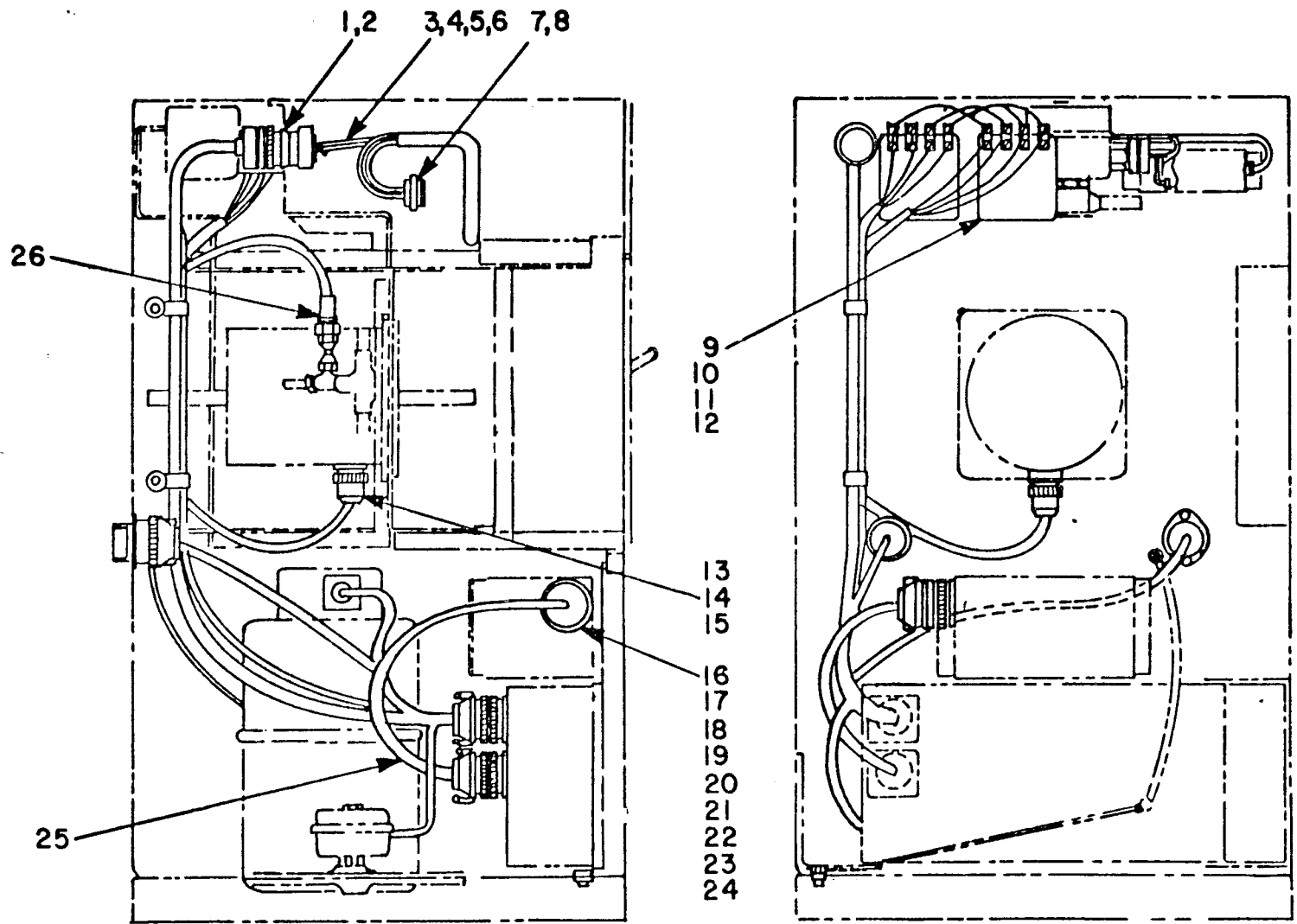


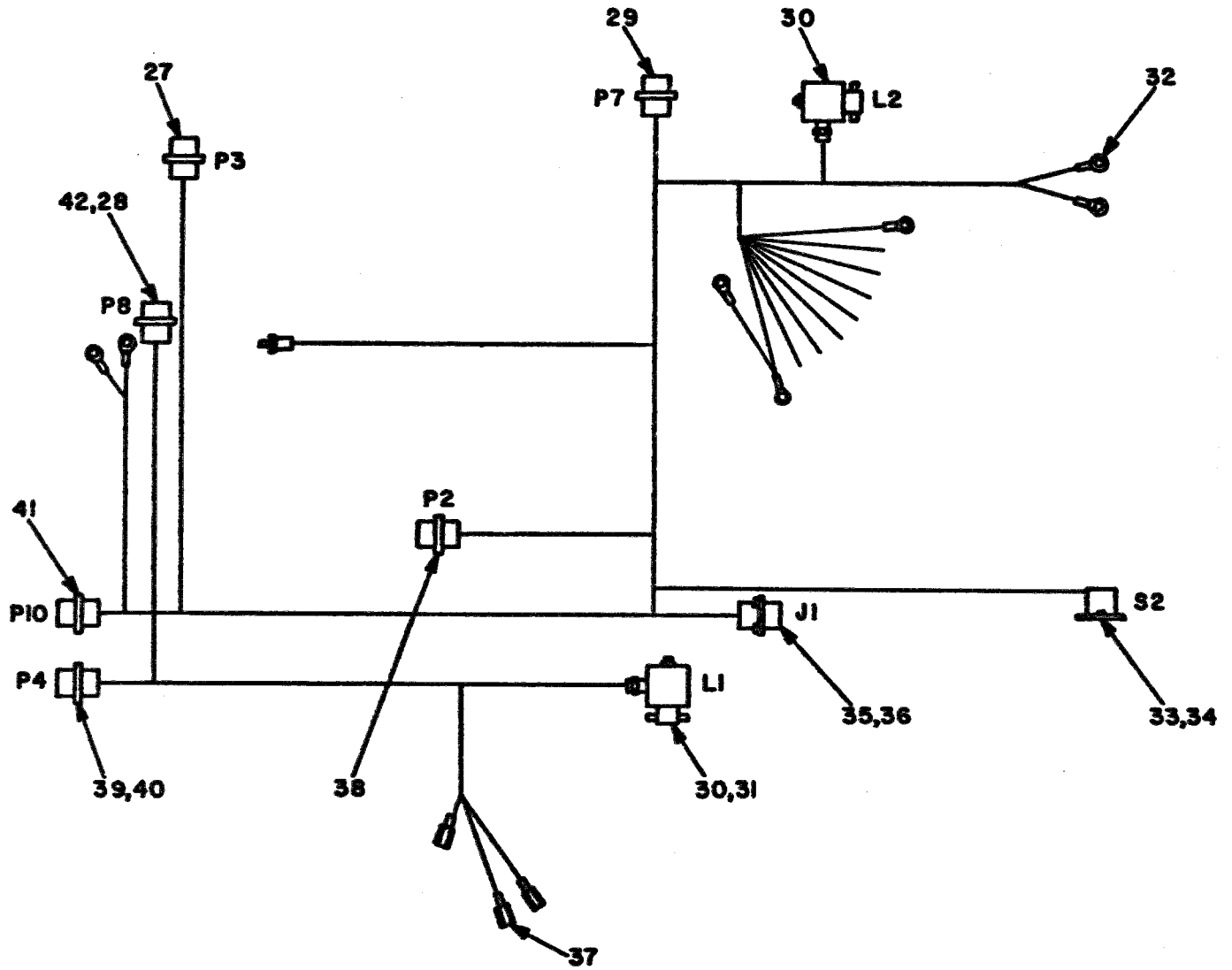
Figure 7. Blockoff Panel

(1) ILLUSTRATION		(2)	(3)	(4)	(5)	(6)		(7)	(8)
(A) FIG NO	(B) ITEM NO	SMR CODE	FEDERAL STOCK NUMBER	PART NUMBER	FSCM	DESCRIPTION	USABLE ON CODE	U/M	QTY INC IN UNIT
GROUP 07 - BLOCKOFF PANEL									
7		XBOZZ		13214E3665	97403	BLOCKOFF ASSEMBLY		EA	1
7	1	XBOZZ		13211E8320	97403	.RING,RETAINER		EA	1
7	2	PAOZZ	5310-00-081-8087	MS21044N06	96906	.NUT,SELF-LOCKING		EA	4
7	3	XBOZZ		13214E3689	97403	.BLOCKOFF		EA	1
7	4	XBOZZ		13214E3471-2	97403	.COVER,PLATE	CYY	EA	1
7	5	PAOZZ	5305-00-889-3001	MS35206-231	96906	.SCREW,MACHINE		EA	4
7	6	PAOZZ	5305-00-432-4173	MS51861-15	96906	.SCREW,MACHINE		EA	4
7	7	XBOZZ		13214E3471-1	97403	.COVER,PLATE	CYX	EA	1



TM5-4120-355-24P/8①

Figure 8. Cabling (sheet 1 of 2).



TM5-4120-355-24P/B(2)

Figure 8. Cabling (sheet 2 of 2).

(1) ILLUSTRATION (A) FIG NO	(2) (B) ITEM NO	(3) SMR CODE	(4) FEDERAL STOCK NUMBER	(5) PART NUMBER	(6) FSCM	DESCRIPTION	USABLE ON CODE	(7) U/M	(8) QTY INC IN UNIT
GROUP 08 - WIRING HARNESS									
8	1	PAOZZ	5310-00-088-0551	MS21044N04	96906	.NUT, SELF-LOCKING		EA	4
8	2	PAOZZ	5305-00-984-4976	MS35206-219	96906	.SCREW, MACHINE		EA	4
8	3	XBOZZ		13214E3587	97403	WIRING HARNESS		EA	1
8	4	PAOZZ	5935-00-835-4208	MS310R16S1PW	96906	.CONNECTOR, RECEPTACLE		EA	1
8	5	XBOZZ		MS25251-16	96906	.PLUG END, SEAL		EA	1
8	6	PAOZZ	5940-00-143-4780	MS25036-108	96906	.TERMINAL LUG		EA	6
8	7	PAOZZ	5305-00-984-6194	MS35206-246	96906	SCREW, MACHINE		EA	2
8	8	PAOZZ	5310-00-809-8544	MS27183-7	96906	WASHER, FLAT		EA	2
8	9	PAOZZ	5945-00-430-6933	13215E9921	97403	RELAY, ELECTROMAGNET		EA	2
8	10	PAOZZ	5305-00-984-6222	MS35206-235	96906	SCREW, MACHINE		EA	6
8	11	PAOZZ	5310-00-082-1404	MS27183-6	96906	WASHER, FLAT		EA	6
8	12	PAOZZ	5310-00-081-8087	MS21044N06	96906	NUT, SELF-LOCKING		EA	6
8	13	XBOZZ		13220E6699	97403	WIRING HARNESS		EA	1
8	14	PAOZZ	5935-00-846-2329	MS3106R20-27S	96906	.CONNECTOR PLUG		EA	1
8	15	PAOZZ	5940-00-143-4774	MS25036-153	96906	.TERMINAL LUG		EA	9
8	16	PAOZZ	5935-00-752-2793	MS3106R28-12P	96906	.CONNECTOR PLUG		EA	1
8	17	XBOZZ		MS25251-16	96906	.PLUG END, SEAL		EA	1
8	18	PAOZZ	5935-00-801-6623	MS3100R28-11S	96906	.CONNECTOR, RECEPTACLE		EA	1
8	19	XBOZZ		MS25251-12	96906	.PLUG END, SEAL		EA	4
8	20	PBOZZ	5961-01-054-4150	13216E7689	97403	.SEMICONDUCTOR DEVICE		EA	1
8	21	PAOZZ	5905-00-412-9602	13216E9514	97403	.TERMINAL LUG		EA	2
8	22	PAOZZ	5940-00-143-4774	MS25036-153	96906	.TERMINAL LUG		EA	5
8	23	PAOZZ	5940-00-143-4775	MS25036-156	96906	.TERMINAL LUG		EA	3
8	24	PAOZZ	5935-00-727-1970	MS3106R20-4S	96906	.CONNECTOR PLUG		EA	1
8	25	XBOZZ		13220E6698	97403	.WIRING HARNESS	CYY	EA	1
8	26	PAFZZ	5930-00-396-2244	13216E7690-2	97403	SWITCH, PRESSURE		EA	1
8	27	PAOZZ	5935-00-800-9858	MS3106R16S1S	96906	CONNECTOR PLUG	CYX	EA	1
8	28	XBOZZ		MS25251-16	96906	PLUG END, SEAL	CYY	EA	5
8	29	PAOZZ	5935-00-800-9858	MS3106R16S1S	96906	CONNECTOR PLUG	CYX	EA	1
8	29	PAOZZ	5935-00-755-3493	MS3106R16-10S	96906	CONNECTOR PLUG	CYY	EA	1
8	30	PAFZZ	4810-00-109-3830	13214E3524	97403	VALVE, SOLENOID	CYX	EA	2
8	31	XBOZZ		13214E3467	97403	BOX CONNECTOR	CYX	EA	2
8	32	PAOZZ	5940-00-143-4774	MS25036-153	96906	TERMINAL LUG	CYX	EA	2
8	33	PAOZZ	5930-00-981-6680	13211E8180	97403	THERMOSTAT	CYX	EA	1
8	34	XBOZZ		13220E5672	97403	PLATE, MOUNTING	CYX	EA	1
8	35	PAOZZ	5935-00-928-7865	MS3100R20-4P	96906	CONNECTOR PLUG	CYX	EA	1
8	35	PAOZZ	5935-00-318-1819	MS3100R20-4PX	96906	CONNECTOR PLUG	CYY	EA	1
8	36	XBOZZ		13211E8320-7	97403	RING, RETAINER	CYX	EA	1
8	37	PAOZZ	5999-00-914-2318	13216E6191-2	97403	TERMINAL LUG	CYY	EA	3
8	37	PAOZZ	5935-00-847-6124	MS3106R32-6S	96906	CONNECTOR	CYX	EA	1
8	38	PAOZZ	5935-00-818-4325	MS3100-14S-6S	96906	CONNECTOR PLUG	CYY	EA	1
8	39	PAOZZ	5935-00-851-9080	MS3106R32-7S	96906	CONNECTOR PLUG	CYY	EA	1

TMS-4120-355-24P

(1)	(2)	(3)	(4)	(5)	(6)		(7)	(8)	
ILLUSTRATION									
(A)	(B)	FEDERAL			DESCRIPTION			QTY	
FIG	ITEM	SMR	STOCK	PART				INC	
NO	NO	CODE	NUMBER	NUMBER	FSCM	USABLE ON CODE	U/M	IN	
8	40	XBOZZ		MS25251-12	96906	PLUG, END SEAL	CYY	EA	3
8	41	PAOZZ	5935-00-879-0235	MS3106R28-9P	96906	CONNECTOR PLUG	CYY	EA	1
8	42	XBOZZ		MS25251-16	96906	PLUG, END SEAL	CYX	EA	3
8	42	PAOZZ	5935-00-853-1913	MS3100P28-17S	96906	CONNECTOR RECEPTACLE	CYY	EA	1

SECTION IV

NATIONAL STOCK NUMBER AND PART NUMBER INDEX

STOCK NUMBER	FIG NO	ITEM NO	STOCK NUMBER	FIG NO	ITEM NO
5945-00-007-7668	4	56	4730-00-257-2163	6	85
5945-00-007-7669	4	47	5310-00-263-2862	6	24
4730-00-007-9399	1	57	4730-00-263-6460	6	37
5925-00-009-3005	4	42	5325-00-263-6632	6	84
5340-00-009-5736	6	36	5325-00-263-6651	6	85
5310-00-014-5850	3	3	5305-00-269-3212	2	11
4730-00-022-1334	6	68	5930-00-275-7800	6	31
5310-00-043-0520	6	58	4730-00-278-8908	6	95
5310-00-045-3296	3	11	5305-00-283-4649	1	29
5310-00-045-3299	1	52	5940-00-283-5280	4	9
5310-00-045-3299	1	71	5940-00-283-5280	4	59
5310-00-045-3299	1	77	5940-00-283-5280	4	67
5310-00-045-3299	6	5	5330-00-285-9314	1	13
5310-00-045-3299	6	49	5325-00-286-6047	3	6
5355-00-051-9146	3	19	5325-00-286-6047	6	14
4130-00-056-4593	6	1	4730-00-289-0365	6	67
5305-00-059-4552	4	19	5930-00-312-4115	6	32
5305-00-059-4552	4	24	5935-00-318-1819	8	35
5310-00-061-7326	3	16	5305-00-356-6102	4	53
5305-00-068-0505	1	54	5930-00-396-2244	8	26
4130-00-073-8404	6	79	5310-00-401-3365	5	5
4820-00-073-8405	6	96	5310-00-407-9566	2	17
5310-00-080-6004	2	9	5905-00-412-9602	8	21
5310-00-080-6004	6	87	4710-00-424-2694	6	35
5310-00-081-4219	2	16	5945-00-430-6933	8	9
5310-00-081-8087	1	53	5305-00-432-4169	1	62
5310-00-081-8087	4	2	5305-00-432-4173	7	6
5310-00-081-8087	4	20	5310-00-466-2481	2	5
5310-00-081-8087	4	26	4130-00-478-5724	6	92
5310-00-081-8087	4	32	5945-00-482-5771	1	83
5310-00-081-8087	7	2	5340-00-490-4415	6	39
5310-00-081-8087	8	12	5945-00-549-6348	4	44
5310-00-082-1404	8	11	5945-00-549-6348	4	56
5305-00-087-0259	6	52	5340-00-550-5942	1	85
5310-00-087-7493	5	1	4710-00-554-8692		44
5310-00-088-0551	1	17	5310-00-579-0079	4	37
5310-00-088-0551	1	45	5355-00-579-2896	3	18
5310-00-088-0551	8	1	5310-00-582-5965	6	11
5305-00-088-8923	6	57	5310-00-582-5965	6	54
6105-00-103-2164	2	7	5310-00-596-7691	1	67
6105-00-103-2165	2	7	5310-00-637-9541	6	88
5340-00-103-2976	3	12	5930-00-683-1628	3	4
5340-00-105-8328	3	20	5935-00-725-7248	4	58
4130-00-105-9292	1	49	5935-00-727-1970	8	24
5340-00-106-0549	6	46	5935-00-752-2793	8	16
5340-00-106-0550	6	63	5935-00-755-2892	4	66
5340-00-106-0551	6	27	5935-00-755-3493	8	29
4820-00-106-1973	6	26	4730-00-769-3964	6	93
4130-00-106-1975	6	20	5935-00-800-9858	8	27
4130-00-106-1976	6	45	5935-00-800-9858	8	29
4140-00-106-2488	2	1	5935-00-801-6623	8	18
5961-00-106-5259	4	13	5935-00-806-4587	4	8
5910-00-109-1987	4	12	5310-00-809-4058	1	55
4810-00-109-3830	8	30	5310-00-809-8544	1	36
4540-00-110-3729	6	8	5310-00-809-8544	1	72
5950-00-112-3352	4	28	5310-00-809-8544	1	78
5940-00-143-4774	4	7	5310-00-809-8544	1	87
5940-00-143-4774	4	61	5310-00-809-8544	8	8
5940-00-143-4774	4	65	5310-00-811-3494	1	93
5940-00-143-4774	8	15	5310-00-811-3494	4	1
5940-00-143-4774	8	22	5310-00-814-0673	5	2
5940-00-143-4774	8	32	4730-00-815-5664	6	9
5940-00-143-4774	8	32	5935-00-818-4325	8	38
5940-00-143-4775	4	10	4730-00-818-7778	6	15
5940-00-143-4775	8	23	5310-00-821-2366	1	2
5940-00-143-4780	4	6	5310-00-821-2366	1	5
5940-00-143-4780		60	5310-00-821-2366	1	11
5940-00-143-4780	4	64	5310-00-821-2366	1	32
5940-00-143-4780	8	6	5310-00-821-2366	1	64
5940-00-143-4794	4	4	5310-00-821-2366	2	3
5940-00-150-4682	4	62	5310-00-821-2366	2	18
4130-00-151-7248	1	10	5310-00-821-2366	6	80
5305-00-163-8348	4	53	4730-00-821-9184	6	65
4140-00-169-6425	2	12	5935-00-835-4208	8	4
5355-00-171-2442	1	66	4730-00-837-0685	6	48
4730-00-189-2737	6	86	5305-00-837-3343	4	49
4730-00-189-2739	6	94	6830-00-837-9927	6	51
4710-00-203-3171	6	21	5935-00-846-2329	8	14
4710-00-203-3172	6	47	5935-00-847-6124	8	37
4710-00-203-3174	6	64	5935-00-851-9080	8	39
5305-00-225-8503	2	15	5935-00-853-1913	8	42
5315-00-234-1856	6	100	5320-00-874-4471	1	28
5306-00-235-4727	5	7	5310-00-877-5797	4	35
5920-00-243-9331	4	16	5310-00-877-5797	4	41
5340-00-251-8288	6	75	5310-00-877-5797	4	55
5325-00-254-4718	6	8	5310-00-877-5798	1	6
4730-00-257-2163	6	61	5310-00-877-5798	6	13



SECTION IV

NATIONAL STOCK NUMBER AND PART NUMBER INDEX

STOCK NUMBER	FIG NO	ITEM NO	STOCK NUMBER	FIG NO	ITEM NO
5935-00-879-0235	8	41	5305-00-984-6194	1	92
5310-00-880-9344	1	30	5305-00-984-6194	2	2
5310-00-880-9344	4	51	5305-00-984-6194	6	
5320-00-882-8388	1	74	5305-00-984-6194	8	7
5310-00-889-2549	3	7	5305-00-984-6195	1	1
5305-00-889-2997	1	68	5305-00-984-6195	1	31
5305-00-889-2999	1	15	5305-00-984-6195	1	51
5305-00-889-3001	4	18	5305-00-984-6195	1	40
5305-00-889-3001	7	5	5305-00-984-6195	1	70
5310-00-902-6676	6	42	5305-00-984-6195	1	76
4730-00-908-3194	6	98	5305-00-984-6195	1	86
5999-00-914-2318	4	5	5305-00-984-6195	4	27
5999-00-914-2318	8	7	5305-00-984-6196	6	38
5930-00-923-4176	3	5	5305-00-984-6212	3	17
4730-00-926-9649	6	4	5305-00-984-6213	4	54
5910-00-927-2738	1	94	5305-00-984-6222	8	10
5935-00-928-7865	8	35	5305-00-989-7434	3	10
5320-00-932-1972	1	8	5305-00-989-7434	4	68
5320-00-932-1972	1	21	5305-00-989-7435	3	2
5320-00-932-1972	1	26	5305-00-989-7435	4	33
5310-00-935-9021	2	8	5305-00-989-7435	6	60
5920-00-939-5442	4	25	5305-00-993-1848	1	18
4730-00-950-5277	6	33	5305-00-993-1848	1	65
5305-00-958-0585	6	82	5305-00-993-1848	2	19
5305-00-958-0588	6	59	5305-00-993-2738	6	53
5930-00-981-6680	8	33	5305-00-995-3441	6	12
5305-00-984-4976	8	2	5310-01-009-9786	1	43
5305-00-984-4983	4	38	5340-01-021-3081	6	73
5305-00-984-4984	6	4	5310-01-032-4875	5	6
5305-00-984-4988	4	43	5325-01-0-3-0846	1	9
5305-00-984-4992	1	46	5310-01-036-0908	1	3
5305-00-984-4992	4	30	5310-01-036-4687	2	5
5305-00-984-4992	6	3	4730-01-037-4919	6	66
5305-00-984-6191	6	50	4820-01-038-8231	6	83
5305-00-984-6191	6	0	5340-01-039-0103	6	17
5305-00-984-6193	3	9	5905-01-048-8719	1	90
5305-00-984-6193	4	46	5961-01-054-4150	8	20
5305-00-984-6193	1	35	5910-01-055-0528	1	95
5305-00-984-6194	1	6	4820-01-056-2991	6	90
5305-00-984-6194	1	12	5930-01-079-6508	3	14
5305-00-984-6194	1	59			

PART NUMBER	FSCM	FIG NO	ITEM NO	PART NUMBER	FSCM	FIG NO	ITEM NO
AD42H	07707	1	8	MS24192D1	96906	4	56
AD42H	07707	1	21	MS24523-22	96906	3	4
AD42H	07707	1	26	MS24665-155	96906	6	100
AD45H	07707	1	28	MS24693S28	96906	4	49
BBF1421TYPE22	81348	6	51	MS25036-106	96906	4	9
CK63AY103M	81349	4	12	MS25036-106	96906	4	59
F09A V2A	81349	4	16	MS25036-106	96906	4	67
MIL-J-6-VBC-420	64731	5	3	MS25036-108	96906	4	6
MIL-J-6-VBC-610	64731	5	3	MS25036-108	96906	4	60
MS20066-143	96906	2	10	MS25036-108	96906	4	64
MS20066-145	96906	2	6	MS25036-108	96906	8	6
MS21044D3	96906	1	16	MS25036-112	96906	4	4
MS21044D3	96906	6	13	MS25036-153	96906	4	7
MS21044N04	96906	1	17	MS25036-153	96906	4	61
MS21044N04	96906	1	45	MS25036-153	96906	4	65
MS21044N04	96906	8	1	MS25036-153	96906	8	15
MS21044N06	6906	1	53	MS25036-153	96906	8	2
MS21044N06	96906	4	2	MS25036-153	96906	8	32
MS21044N06	96906	4	20	MS25036-153	96906	4	10
MS21044N06	96906	4	26	MS25036-156	96906	4	10
MS21044N06	96906	4	32	MS25036-156	96906	8	23
MS21044N06	96906	7	2	MS25043-200	96906	1	61
MS21044N06	96906	8	12	MS25165-1	96906	3	18
MS21044N08	96906	1	93	MS25167P1B	96906	3	19
MS21044N08	96906	4	1	MS25251-12	96906	8	19
MS21044N3	96906	4	35	MS25251-12	96906	8	40
MS21044N3	96906	4	41	MS25251-16	96906	8	5
MS21044N3	96906	4	55	MS25251-16	96906	8	17
MS21045-08	96906	3	7	MS25251-16	96906	8	28
MS21045-3	96906	3	16	MS25251-16	97403	8	42
MS21045C3	96906	6	24	MS27130-S14K	96906	1	43
MS21083N3	96906	6	42	MS27130-S15K	96906	2	5
MS21104C3	96906	6	39	MS27130-14	96906	1	43
MS21104D10	96906	6	27	MS27130A15	96906	2	5
MS21104D34	96906	6	75	MS27183-10	96906	1	55
MS21104D38	96906	6	73	MS27183-12	96906	2	16
MS21104D4	96906	6	46	MS27183-13	96906	5	1
MS21104D6	96906	3	20	MS27183-14	96906	2	9
MS21104D8	96906	6	63	MS27183-14	96906	6	87
MS21105-6	96906	3	12	MS27183-42	96906	3	3
MS24192D1	96906	4	44	MS27183-6	96906	8	11

SECTION IV

NATIONAL STOCK NUMBER AND PART NUMBER INDEX

PART NUMBER	FSCM	FIG NO	ITEM NO	PART NUMBER	FSCM	FIG NO	ITEM NO
MS27183-7	96906	1	36	MS35489-1	96906	6	14
MS27183-7	96906	1	72	MS35489-12	96906	6	85
MS27183-7	96906	1	78	MS35489-6	96906	6	84
MS27183-7	96906	1	87	MS35650-3252	96906	6	58
MS27183-7	96906	8	8	MS35842-11	96906	6	98
MS3100-14S-6S	96906	8	38	MS35872-2	96906	6	86
MS3100R16S1PW	96906	8	4	MS35872-3	96906	6	94
MS3100R20-4P	96906	8	35	MS35917-3	96906	6	48
MS3100R20-4PX	96906	8	35	MS35919-22	96906	6	66
MS3100R28-11S	96906	8	18	MS35928-4	96906	6	68
MS3100R28-17S	96906	8	42	MS35929-2	96906	6	61
MS3102R28-12S	96906	4	58	MS35929-2	96906	6	85
MS3102R28-9S	96906	4	66	MS35929-3	96906	6	37
MS3102R32-6P	96906	4	8	MS51007-10	96906	4	11
MS3106R16-10S	96906	8	29	MS51007-11	96906	1	48
MS3106R16S1S	96906	8	27	MS51007-12	96906	4	21
MS3106R16S1S	96906	8	29	MS51007-7	96906	1	60
MS3106R20-27S	96906	8	14	MS51861-14	1	62	
MS3106R20-4S	96906	8	24	MS51861-15	96906	7	6
MS3106R28-12P	96906	8	16	MS51943-33	96906	5	2
MS3106R28-9P	96906	8	41	MS51943-35	96906	2	8
MS3106R32-6S	96906	8	37	MS63045	96906	1	7
MS3106R32-7S	96906	8	39	MS90725-39	96906	2	15
MS3367-3-9	96906	1	81	MS90725-61	96906	2	11
MS35190-237	96906	4	19	MS90726-5	96906	1	54
MS35190-237	96906	4	24	MS9122-05	96906	6	52
MS35206-215	96906	1	68	MS9241-007	96906	4	31
MS35206-217	96906	1	15	NAS1523C3F	80205	1	14
MS35206-219	96906	8	2	NAS3103C5-10	80205	6	25
MS35206-226	96906	4	38	RCR32G153KM	81349	1	90
MS35206-227	96906	6	4	R655-71C110	97450	1	13
MS35206-228	96906	4	43	SAEJ513	81343	6	67
MS35206-231	96906	4	18	WWT775-1-2	81348	6	35
MS35206-231	96906	7	5	WWT775-1-4	81348	6	21
MS35206-232	96906	1	46	WWT775-3-4	81348	6	44
MS35206-232	96906	4	30	WWT775-3-8	81348	6	47
MS35206-232	96906	6	3	WWT775-5-8	81348	6	64
MS35206-235	96906	8	10	12-11-713-11	94222	1	29
MS35206-243	96906	6	50	12-11014-12	94222	1	30
MS35206-243	96906	6	70	12-11014-12	94222	4	51
MS35206-245	96906	3	9	13211E3784	97403	4	23
MS35206-245	96906	4	46	13211E3785	97403	4	25
MS35206-245	96906	1	35	13211E3799-1	97403	6	62
MS35206-246	96906	1	6	13211E4043-12	97403	6	65
MS35206-246	96906	1	12	13211E4043-14	97403	6	33
MS35206-246	96906	1	59	13211E4043-6	97403	6	15
MS35206-246	96906	1	92	13211E4043-7	97403	6	9
MS35206-246	96906	2	2	13211E8166	97403	5	7
MS35206-246	96906	6	72	13211E8170	97403	5	5
MS35206-246	96906	8	7	13211E8178	97403	1	57
MS35206-247	96906	1	1	13211E8180	97403	8	33
MS35206-247	96906	1	31	13211E8215	97403	1	69
MS35206-247	96906	1	51	13211E8218	97403	6	79
MS35206-247	96906	1	40	13211E8222	97403	3	8
MS35206-247	96906	1	70	13211E8227	97403	6	1
MS35206-247	96906	1	76	13211E8242	97403	6	76
MS35206-247	96906	1	86	13211E8255	97403	6	78
MS35206-247	96906	4	27	13211E8273	97403	1	58
MS35206-248	96906	6	38	13211E8298	97403	3	14
MS35206-263	96906	4	68	13211E8301-1	97403	3	5
MS35206-265	96906	3	17	13211E8320	97403	7	1
MS35206-266	96906	4	54	13211E8320-7	97403	8	36
MS35207-263	96906	3	10	13211E8323	97403	6	97
MS35207-264	96906	3	2	13211E8369	97403	6	96
MS35207-264	96906	4	33	13211E8376-1	97403	6	28
MS35207-264	96906	6	60	13211E8376-2	97403	6	81
MS35207-265	96906	1	18	13211E8376-3	97403	6	89
MS35207-265	96906	1	65	13211E8376-5	97403	6	40
MS35207-265	96906	2	19	13211E8399C28-17P	97403	3	1
MS35207-269	96906	6	12	13211E8404	97403	6	31
MS35207-272	96906	6	82	13211E8406-1	97403	6	56
MS35207-280	96906	6	53	13211E8406-2	97403	6	55
MS35207-285	96906	6	57	13211E8411	97403	6	102
MS35207-287	96906	6	59	13211E8412	97403	6	101
MS35333-37	96906	4	37	13211E8416	97403	6	6
MS35335-32	96906	1	67	13214E3372-1	97403	6	10
MS35338-42	96906	1	52	13214E3372-2	97403	6	29
MS35338-42	96906	1	71	13214E3384	97403	1	4
MS35338-42	96906	1	77	13214E3386	97403	1	56
MS35338-42	96906	6	5	13214E3411-1	97403	6	34
MS35338-42	96906	6	49	13214E3411-2	97403	6	95
MS35338-43	96906	3	11	13214E3412	97403	4	52
MS35338-44	96906	6	11	13214E3416	97403	6	17
MS35338-44	96906	6	54	13214E3419	97403	6	77
MS35338-45	96906	2	17	13214E3467	97403	8	31
MS35338-46	96906	6	88	13214E3469	97403	1	2
MS35489-1	96906	3	6				

## SECTION IV

## NATIONAL STOCK NUMBER AND PART NUMBER INDEX

PART NUMBER	FSCM	FIG NO	ITEM NO	PART NUMBER	FSCM	FIG NO	ITEM NO
13214E3469	97403	1	5	13215E9921	97403	8	9
13214E3469	97403	1	11	13216E6182-2	97403	4	56
13214E3469	97403	1	32	13216E6182-3	97403	4	47
13214E3469	97403	1	64	13216E6191-2	97403	4	5
13214E3469	97403	2	3	13216E6191-2	97403	8	37
13214E3469	97403	2	18	13216E6192	97403	4	62
13214E3469	97403	6	80	13216E6205-8	97403	4	42
13214E3471-1	97403	1	19	13216E6206-4	97403	4	42
13214E3471-1	97403	7	7	13216E6240	97403	1	83
13214E3471-2	97403	1	47	13216E6243-1	97403	1	88
13214E3471-2	97403	7	4	13216E6244-2	97403	1	89
13214E3476	97403	5	6	13216E7689	97403	8	20
13214E3477	97403	1	3	13216E7690-2	97403	8	26
13214E3478	97403	1	33	13216E9514	97403	8	21
13214E3484	97403	6	99	13216E9517	97403	1	63
13214E3486	97403	6	103	13216E9519-2	97403	1	38
13214E3487-1	97403	4	40	13216E9520-2	97403	1	37
13214E3524	97403	8	30	13217E5636	97403	2	14
13214E3527	97403	1	80	13217E6815	97403	1	44
13214E3529-1	97403	1	94	13217E6816	97403	1	66
13214E3529-2	97403	1	95	13217E6817	97403	6	43
13214E3531	97403	1	91	13218E6975	97403	6	7
13214E3534	97403	1	10	13218E6977	97403	1	41
13214E3544	97403	1	79	13218E6978	97403	6	69
13214E3547	97403	2	13	13218E7076	97403	1	22
13214E3551	97403	1	39	13218E7077	97403	1	20
13214E3552	97403	2	4	13218E7078	97403	1	75
13214E3553	97403	6	45	13218E7079	97403	1	25
13214E3554	97403	6	20	13218E8178	97403	1	24
13214E3556	97403	1	73	13218E9511	97403	3	13
13214E3557	97403	6	92	13218E9895-1	97403	4	34
13214E3558	97403	2	12	13218E9897	97403	4	45
13214E3559	97403	2	1	13218E9898	97403	4	57
13214E3561	97403	6	18	13218E9903	97403	4	3
13214E3567	97403	6	74	13218E9909	97403	3	15
13214E3568-1	97403	6	90	13218E9914	97403	4	34
13214E3578-2	97403	6	2	13218E9947	97403	4	48
13214E3587	97403	8	3	13218E9948-1	94703	1	24
13214E3592-2	97403	6	71	13219E2927	94703	1	23
13214E3596	97403	6	93	13219E2929	97406	1	23
13214E3629-2	97403	6	23	13219E2934	97403	1	34
13214E3647-3	97403	1	9	13219E9540	97403	6	8
13214E3652	97403	4	13	13220E5385-2	97403	4	39
13214E3659	97403	5	4	13220E5386	97403	6	41
13214E3665	97403	7	80	13220E5413-1	97403	6	19
13214E3685-2	97403	4	29	13220E5414	97403	6	22
13214E3689	97403	7	3	13220E5415	97403	6	16
13214E3699-2	97403	1	49	13220E5672	97403	8	34
13214E3726	97403	4	22	13220E6557	97403	1	27
13214E3728-1	97403	2	7	13220E6559	97403	4	63
13214E3728-2	97403	2	7	13220E6561	97403	6	30
13214E3742	97403	6	26	13220E6636	97403	4	12
13214E3743-1	97403	6	36	13220E6695	97403	1	50
13214E3744-1	97403	4	53	13220E6697	97403	1	42
13214E3744V8	97403	4	53	13220E6698	97403	8	25
13214E3785-2	97403	6	83	13220E6699	97403	8	13
13214E3789-3	97403	1	74	13220E6700	97403	1	27
13214E3794	97403	6	32	13220E6827	97403	6	30
13214E3798-1	97403	6	91	13220E7993	97403	4	36
13214E3804	97403	4	17	13220E8465	97403	1	82
13214E3811	97403	4	15	13221E7432-2	97403	1	84
13214E3814	97403	4	14	39TB8	81349	4	50
13214E3818-1	97403	4	28				



By Order of the Secretary of the Army:

**E. C. MEYER**  
**General, United States Army**  
**Chief of Staff**

**Official:**

**J. C. PENNINGTON**  
**Major General, United States Army**  
**The Adjutant General**

**DISTRIBUTION:**

To be distributed in accordance with DA Form 12-25C, Organizational Maintenance requirements for Environmental Air Conditioners, 6,000 BTU.





# SOMETHING WRONG WITH THIS MANUAL?

THEN... JOT DOWN THE DOPE ABOUT IT ON THIS FORM. TEAR IT OUT, FOLD IT AND DROP IT IN THE MAIL!

FROM: (YOUR UNIT'S COMPLETE ADDRESS)  
 PFC JOHN DOE  
 COA, 3<sup>d</sup> ENGINEER BN  
 FT. LEONARD WOOD MO 63108

DATE

PUBLICATION NUMBER: TM 5-4120-355-24P      DATE: 29 Nov 79      TITLE: Air Conditioner, 6,000 BTU

BE EXACT... PIN-POINT WHERE IT IS

IN THIS SPACE TELL WHAT IS WRONG AND WHAT SHOULD BE DONE ABOUT IT:

PAGE NO.	PARA-GRAPH	FIGURE NO.	TABLE NO.
6	2-1 a		
81		4-3	
125	line 20		

In line 6 of paragraph 2-1a the manual states the engine has 6 cylinders. The engine on my set only has 4 cylinders. Change the manual to show 4 cylinders.

Callout 16 on figure 4-3 is pointing at a bolt. In the key to fig. 4-3, item 16 is called a skim. Please correct one or the other.

Ordered a gasket, item 19 on figure B-16 by NSN 2910-00-762-3001. I got a gasket but it doesn't fit. Supply says I got what I ordered, so the NSN is wrong. Please give me a good NSN.

SAMPLE

TYPED NAME, GRADE OR TITLE, AND TELEPHONE NUMBER

JOHN DOE, PFC (268) 317-7111

SIGN HERE:

*John Doe*

DA FORM 2028-2  
1 AUG 74

P.S.--IF YOUR OUTFIT WANTS TO KNOW ABOUT YOUR MANUAL "FIND," MAKE A CARBON COPY OF THIS AND GIVE IT TO YOUR HEADQUARTERS.  
 DRSTS-M Overprint 1, 1 Nov 78

TEAR ALONG DOTTED LINE

FILL IN YOUR  
UNIT'S ADDRESS

FOLD BACK

DEPARTMENT OF THE ARMY

POSTAGE AND FEES PAID  
DEPARTMENT OF THE ARMY  
DOD-314

OFFICIAL BUSINESS  
PENALTY FOR PRIVATE USE, \$300

Commander:  
U.S. Army Support and Aviation  
Material Readiness Command  
ATTN: DRSTS-MTPS  
4300 Goodfellow Boulevard  
St. Louis, Mo. 63120

LEAVE ALONG DOTTED LINE

FOLD BACK



RECOMMENDED CHANGES TO EQUIPMENT TECHNICAL MANUALS



# SOMETHING WRONG WITH THIS MANUAL?

THEN... JOT DOWN THE DOPE ABOUT IT ON THIS FORM, TEAR IT OUT, FOLD IT AND DROP IT IN THE MAIL!

FROM: (YOUR UNIT'S COMPLETE ADDRESS)

DATE

PUBLICATION NUMBER

TM 5-4120-355-24P

DATE

21 Nov '79

TITLE

Air Conditioner, 6,000BTU

BE EXACT... PIN-POINT WHERE IT IS

IN THIS SPACE TELL WHAT IS WRONG AND WHAT SHOULD BE DONE ABOUT IT:

PAGE NO.	PARA-GRAPH	FIGURE NO.	TABLE NO.
----------	------------	------------	-----------

TEAR ALONG DOTTED LINE

TYPED NAME, GRADE OR TITLE, AND TELEPHONE NUMBER

SIGN HERE:

FILL IN YOUR  
UNIT'S ADDRESS



FOLD BACK

DEPARTMENT OF THE ARMY

POSTAGE AND FEES PAID  
DEPARTMENT OF THE ARMY

DDO-314

OFFICIAL BUSINESS

PENALTY FOR PRIVATE USE, \$300

Commander  
US Army Troop Support and Aviation  
Materiel Readiness Command  
ATTN: DRSTS-MTPS  
4300 Goodfellow Boulevard  
St. Louis, MO 63120

TEAR ALONG DOTTED LINE

FOLD BACK



# SOMETHING WRONG WITH THIS MANUAL?

THEN... JOT DOWN THE DOPE ABOUT IT ON THIS FORM, TEAR IT OUT, FOLD IT AND DROP IT IN THE MAIL!

FROM: (YOUR UNIT'S COMPLETE ADDRESS)

DATE

PUBLICATION NUMBER

TM 5-4120-355-24P

DATE

29 Nov 79

TITLE

Air Conditioner 6,000 BTU

BE EXACT... PIN-POINT WHERE IT IS

IN THIS SPACE TELL WHAT IS WRONG AND WHAT SHOULD BE DONE ABOUT IT:

PAGE NO.

PARA-GRAPH

FIGURE NO.

TABLE NO.

TEAR ALONG DOTTED LINE

TYPED NAME, GRADE OR TITLE, AND TELEPHONE NUMBER

SIGN HERE:

FILL IN YOUR  
UNIT'S ADDRESS

FOLD BACK

DEPARTMENT OF THE ARMY

POSTAGE AND FEES PAID  
DEPARTMENT OF THE ARMY  
DOD-314

OFFICIAL BUSINESS  
PENALTY FOR PRIVATE USE, \$300

Commander:  
U.S. Army Support and Aviation  
Material Readiness Command  
ATTN: DRSTS-MTPS  
4300 Goodfellow Boulevard  
St. Louis, Mo. 63120

FOLD BACK

RECOMMENDED CHANGES TO EQUIPMENT TECHNICAL MANUALS



# SOMETHING WRONG WITH THIS MANUAL?

THEN... JOT DOWN THE DOPE ABOUT IT ON THIS FORM, TEAR IT OUT, FOLD IT AND DROP IT IN THE MAIL!

FROM: (YOUR UNIT'S COMPLETE ADDRESS)

DATE

PUBLICATION NUMBER

DATE

TITLE

TM 5-4120-355-24P

29 Nov '79

Air Conditioner, 6,000 BTU

BE EXACT... PIN-POINT WHERE IT IS

IN THIS SPACE TELL WHAT IS WRONG AND WHAT SHOULD BE DONE ABOUT IT:

PAGE NO.

PARA-GRAPH

FIGURE NO.

TABLE NO.

TEAR ALONG DOTTED LINE

TYPED NAME, GRADE OR TITLE, AND TELEPHONE NUMBER

SIGN HERE:

DA FORM 2028-2  
1 AUG 74

P.S.--IF YOUR OUTFIT WANTS TO KNOW ABOUT YOUR MANUAL "FIND," MAKE A CARBON COPY OF THIS AND GIVE IT TO YOUR HEADQUARTERS.

FILL IN YOUR  
UNIT'S ADDRESS

FOLD BACK

DEPARTMENT OF THE ARMY

POSTAGE AND FEES PAID  
DEPARTMENT OF THE ARMY  
DOD-314

OFFICIAL BUSINESS  
PENALTY FOR PRIVATE USE, \$300

Commander:  
U.S. Army Support and Aviation  
Material Readiness Command  
ATTN: DRSTS-MTPS  
4300 Goodfellow Boulevard  
St. Louis, Mo. 63120

TEAR ALONG DOTTED LINE

FOLD BACK

# The Metric System and Equivalents

## Linear Measure

1 centimeter = 10 millimeters = .39 inch  
 1 decimeter = 10 centimeters = 3.94 inches  
 1 meter = 10 decimeters = 39.37 inches  
 1 dekameter = 10 meters = 32.8 feet  
 1 hectometer = 10 dekameters = 328.08 feet  
 1 kilometer = 10 hectometers = 3,280.8 feet

## Weights

1 centigram = 10 milligrams = .15 grain  
 1 decigram = 10 centigrams = 1.54 grains  
 1 gram = 10 decigrams = .035 ounce  
 1 dekagram = 10 grams = .35 ounce  
 1 hectogram = 10 dekagrams = 3.52 ounces  
 1 kilogram = 10 hectograms = 2.2 pounds  
 1 quintal = 100 kilograms = 220.46 pounds  
 1 metric ton = 10 quintals = 1.1 short tons

## Liquid Measure

1 centiliter = 10 milliliters = .34 fl. ounce  
 1 deciliter = 10 centiliters = 3.38 fl. ounces  
 1 liter = 10 deciliters = 38.82 fl. ounces  
 1 dekaliter = 10 liters = 2.64 gallons  
 1 hectoliter = 10 dekaliters = 26.42 gallons  
 1 kiloliter = 10 hectoliters = 264.18 gallons

## Square Measure

1 sq. centimeter = 100 sq. millimeters = .155 sq. inch  
 1 sq. decimeter = 100 sq. centimeters = 15.5 sq. inches  
 1 sq. meter (centare) = 100 sq. decimeters = 10.76 sq. feet  
 1 sq. dekameter (are) = 100 sq. meters = 1,076.4 sq. feet  
 1 sq. hectometer (hectare) = 100 sq. dekameters = 2.47 acres  
 1 sq. kilometer = 100 sq. hectometers = .386 sq. mile

## Cubic Measure

1 cu. centimeter = 1000 cu. millimeters = .06 cu. inch  
 1 cu. decimeter = 1000 cu. centimeters = 61.02 cu. inches  
 1 cu. meter = 1000 cu. decimeters = 35.31 cu. feet

## Approximate Conversion Factors

To change	To	Multiply by	To change	To	Multiply by
inches	centimeters	2.540	ounce-inches	newton-meters	.007062
feet	meters	.305	centimeters	inches	.394
yards	meters	.914	meters	feet	3.280
miles	kilometers	1.609	meters	yards	1.094
square inches	square centimeters	6.451	kilometers	miles	.621
square feet	square meters	.093	square centimeters	square inches	.155
square yards	square meters	.836	square meters	square feet	10.764
square miles	square kilometers	2.590	square meters	square yards	1.196
acres	square hectometers	.405	square kilometers	square miles	.386
cubic feet	cubic meters	.028	square hectometers	acres	2.471
cubic yards	cubic meters	.765	cubic meters	cubic feet	35.315
fluid ounces	milliliters	29.573	cubic meters	cubic yards	1.308
pints	liters	.473	milliliters	fluid ounces	.034
quarts	liters	.946	liters	pints	2.113
gallons	liters	3.785	liters	quarts	1.057
ounces	grams	28.349	liters	gallons	.264
pounds	kilograms	.454	grams	ounces	.035
short tons	metric tons	.907	kilograms	pounds	2.205
pound-feet	newton-meters	1.365	metric tons	short tons	1.102
pound-inches	newton-meters	.11375			

## Temperature (Exact)

°F	Fahrenheit temperature	5/9 (after subtracting 32)	Celsius temperature	°C
----	------------------------	----------------------------	---------------------	----

